

IGH (14q32) Green/ MALT1 (18q21) Orange

FISH Probe
902-7021-102517

BIOCARE
M E D I C A L

Catalog Number: PFR7021A
Description: IGH (14q32) Green/ MALT1 (18q21) Orange FISH Probe
Dilution: Ready-to-use
Volume: 100 μ L

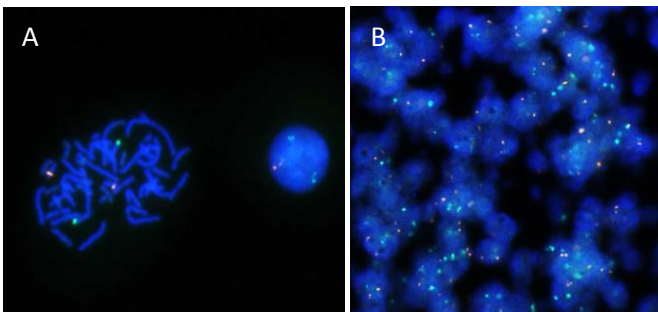
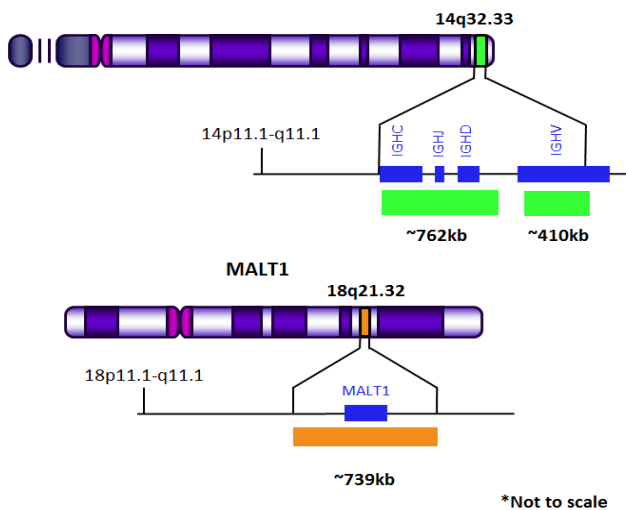
Intended Use:
For Research Use Only. Not for use in diagnostic procedures.

Summary and Explanation:

Gene rearrangement in t(14;18)/IGH-MALT1 was detected in MALT lymphoma first. The frequencies at which the translocation occurs vary markedly with the primary site of the disease¹. IGH-MALT1 rearrangements were described also in other B-NHLs such as DLBCL (Diffuse Large B-Cell Lymphoma)². IGH-MALT1 fusion in the t(14;18)(q32;q21) have been identified in marginal zone B-cell lymphomas of the mucosa-associated lymphoid tissue (MALT) type.

Principle of Procedure:

The IGH (14q32) Green Probe is designed to provide coverage of the IGH (14q32) (~ 762 kb and ~ 410 kb) region of chromosome 14. The MALT1 Orange Probe is designed to provide coverage of the 18q21.32 (~ 739 kb) region of chromosome 18.



A) IGH (14q32) Green/ MALT1 (18q21) Orange FISH probe hybridized on normal blood sample. Interphase and metaphase cellular states are shown. B) IGH (14q32) Green/ MALT1 (18q21) Orange FISH probe hybridized on an FFPE sample.

Species Reactivity: Human

Known Application:

Fluorescence In-Situ Hybridization (FISH) on formalin-fixed paraffin embedded (FFPE) tissues.

Supplied As: Probe in hybridization buffer.

Storage and Stability:

Store probe at -20°C and away from light. The product is stable to the expiration date printed on the label, when stored under these conditions. Do not use after expiration date.

Technical Note:

Biocare Medical FISH probes are optimized to provide the best signal performance using optical filters that can accommodate the excitation/emission wavelengths specified below. Using filters outside these spectral specifications may produce sub-optimal results.

Fluorophore	Excitation (nm)	Emission (nm)
AQUA	432	472
GREEN	498	521
ORANGE	546	575
RED	593	618

Limitations:


1. This product is Research Use Only.
2. It is the responsibility of the user to validate any test for its specific use.

Precautions:

1. This product contains formamide, which may be toxic. Formamide may cause serious eye damage or reproductive toxicity. It may also cause irritation by inhalation or skin contact. Avoid any direct contact exposure to reagent. Take appropriate protective measures (use disposable gloves, protective glasses, and lab garments).
2. Specimens, before and after fixation, and all materials exposed to them should be handled as if capable of transmitting infection and disposed of with proper precautions. Never pipette reagents by mouth and avoid contacting the skin and mucous membranes with reagents and specimens. If reagents or specimens come in contact with sensitive areas, wash with copious amounts of water³.
3. The SDS is available upon request and is located at <http://biocare.net/>.

Technical Support:

Contact Biocare Medical's Technical Support at 1-800-542-2002 for questions regarding this product.

 Biocare Medical
60 Berry Drive
Pacheco, CA 94553
USA

Rev. 062117

Tel: 800-799-9499 | www.biocare.net | Fax: 925-603-8080

IGH (14q32) Green/ MALT1 (18q21) Orange

FISH Probe
902-7021-102517

BIOCARE
M E D I C A L

References:

1. Variable frequencies of MALT lymphoma-associated genetic aberrations in MALT lymphomas of different sites. Streubel B, Simonitsch-Klupp I, Müllauer L, Lamprecht A, Huber D, Siebert R, Stolte M, Trautinger F, Lukas J, Puspok A, Formanek M, Assanasen T, Muller-Hermelink HK, Cerroni L, Raderer M, Chott A. *Leukemia* 2004; 18: 1722-1726.
2. t(14;18)(q32;q21) involving IGH and MALT1 is a frequent chromosomal aberration in MALT lymphoma. Streubel B, Lamprecht A, Dierlamm J, Cerroni L, Stolte M, Ott G, Raderer M, Chott A. *Blood* 2003; 101: 2335-2339.
3. Clinical and Laboratory Standards Institute (CLSI). Protection of Laboratory workers from occupationally Acquired Infections; Approved Guideline-Fourth Edition CLSI document M29-A4 Wayne, PA 2014.



60 Berry Drive
Pacheco, CA 94553
USA

Rev. 062117

Tel: 800-799-9499 | www.biocare.net | Fax: 925-603-8080