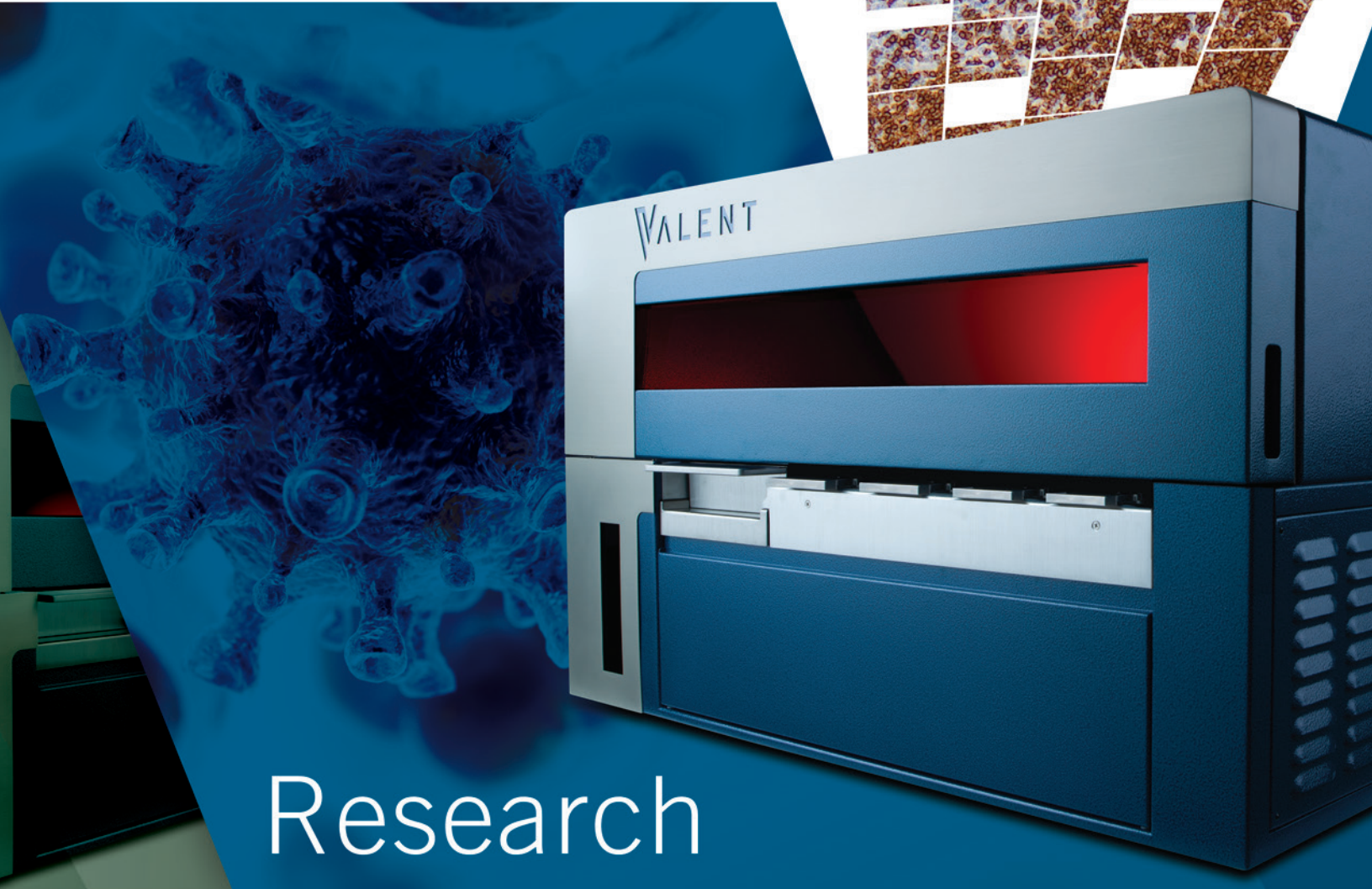
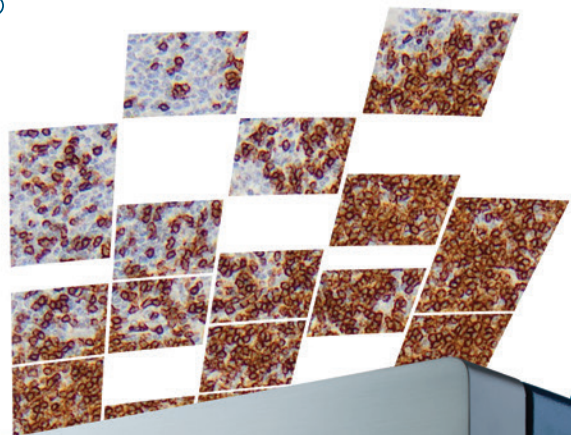


**BIOCARE**  
M E D I C A L

# VALENT<sup>®</sup>

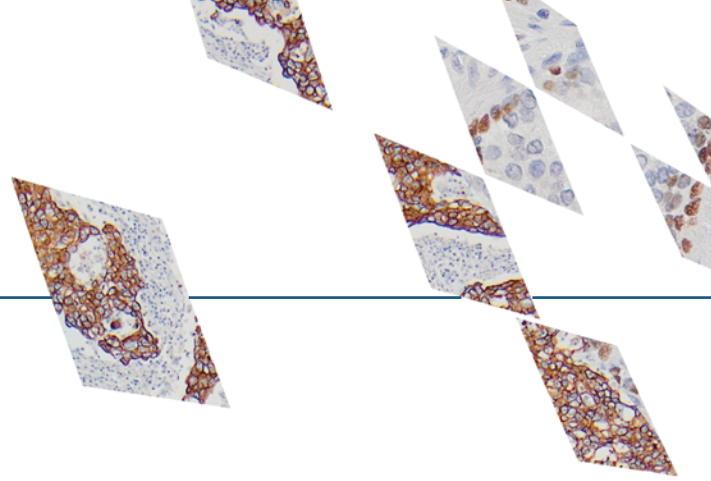
The Power of Advanced Automation



## Research

Maximum Versatility

Innovative Performance



## Discover More with Multiplex IHC Capability

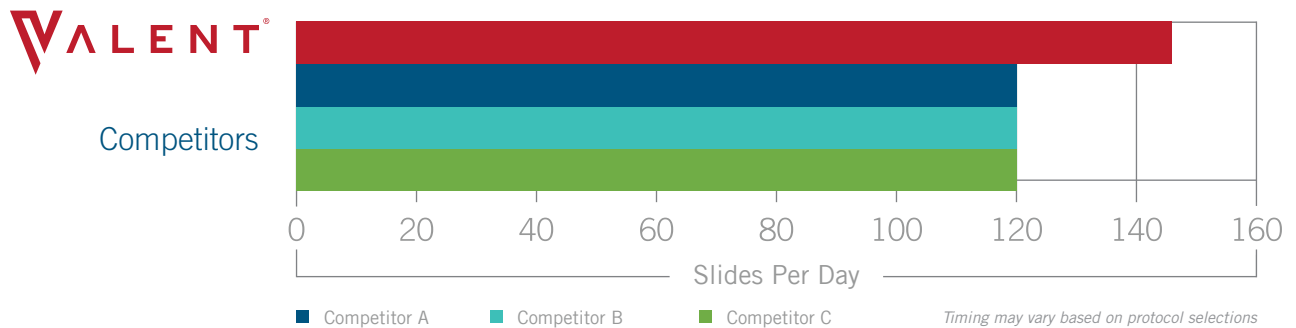
Biocare Medical is the proven leader in multiplex IHC - simultaneous IHC staining with multiple antibodies - on a single slide. As Biocare's newest automated slide staining platform, VALENT is designed to run simultaneous multiplex IHC protocols, providing your laboratory the opportunity to save time, money, and precious tissue samples with every multiplex run.

## Open System for Maximum Versatility

VALENT is designed to support the varied techniques your IHC laboratory utilizes to answer critical questions. For ultimate convenience, Biocare Medical offers a full line of high quality ready-to-use reagents and antibodies that have been optimized for maximum performance on the VALENT. When needed, the open design of VALENT enables you to apply enzyme pre-treatments, antibodies, detections, or chromogens from any source. VALENT provides the ultimate in versatility for research laboratories, by maximizing protocol flexibility and supporting a broad range of IHC testing needs.

## Innovative Design for Powerful Processing

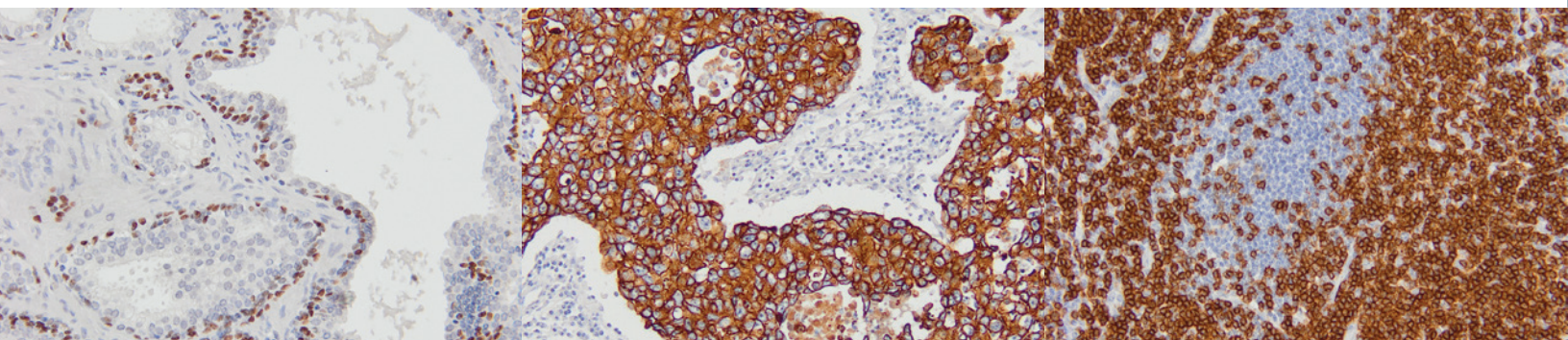
VALENT breaks the 30-slide barrier with true parallel processing of 48 slides simultaneously, capable of handling an unparalleled 144 slides per day with minimal user interaction. VALENT's high capacity lithium battery, in addition to boosting AR, acts as electrical back-up in the event of power loss. Under-slide heaters, and the associated power draw on standard electrical circuits for parallel slide processing, has limited the competition to maximum runs of 30 slides. Even with claimed run times of 2.5 hours for 30 slides, the maximum slides per standard shift is 120.



*p63 - nuclear*

*CK8/18 - membrane*

*CD3 - cytoplasmic*





# The Power of Advanced Automation

*VALENT is designed to be an innovative, fully automated, open and flexible instrument to produce quality stains the research laboratory requires.*

## Automate the Entire IHC Protocol with Enhanced Workflow

### Inuitive User Interface

Step-by-step programming  
Automatic error checking

### DePar to Counterstain

Full protocol automation, ready to use reagents  
Customizable pre-treatment options

### Self Cleaning

Minimal maintenance demands  
Maximizes walk-away time

### High Throughput

48 slide capacity  
Simultaneous multiplex IHC capability



**LOAD & GO** ▶

## Instrument Specifications

<b>Cat. No.</b>	VLT8101
<b>Slide Capacity</b>	48
<b>Independent Slide Trays</b>	4 Trays, 12 Slides Per Tray
<b>Refrigerated Reagent / Mixing Vial Rack</b>	44 Positions, 20mL Vials; Temperature Range: Room Temperature to 10°C Below Room Temperature
<b>Antigen Retrieval Temperature Range</b>	Room Temperature to 98°C at Sea Level
<b>Reagent Dispensing Volume</b>	300µL
<b>Multi-Dispensing Syringe Capacity</b>	300µL – 14.4mL (48 slides x 300uL/slide)
<b>DePar Dispense Volume</b>	1mL Per Slide
<b>Bulk Reagents</b>	4
<b>Waste Outlets</b>	2
<b>Waste Separation</b>	Separates Hazardous and Non-Hazardous
<b>Unit Control</b>	One Instrument Per Computer
<b>Instrument Dimensions</b>	40" W X 24" D X 26" H / 102 cm W X 61 cm D X 66 cm H
<b>Instrument Weight</b>	245lbs / 111.1kg
<b>Electrical requirements</b>	<b>Power input:</b> 1800 (1800VA) / <b>Power source:</b> 100-120 VAC, 50/60Hz The VALENT cannot be used without the VALENT Cart, power supplied to the VALENT from the VALENT Cart may reach 3600W at 120V. The use of a dedicated circuit capable of delivering a minimum of 1850W continuously with less than 5% voltage sag is required for the instrument. Avoid connecting the instrument to the same circuit as other equipment.

## Cart Specifications

<b>Cat. No.</b>	VLT8102 (50 Hz), VLT8103 (60 Hz)
<b>Bulk Carboy Capacity</b>	8L
<b>Bulk Carboys</b>	The VALENT Cart Holds 6 Carboys
<b>Secondary Containment Capacity</b>	11L Maximum Capacity
<b>VALENT Cart Dimensions</b>	40"W X 24"D X 30"H / 102cm W X 61cm D X 77cm H
<b>Cart Weight</b>	250lbs / 113.4kg
<b>Main Supply Voltage Tolerance</b>	±10%
<b>Electrical Requirements</b>	<b>Power output:</b> 3600W (3600VA) <b>Power source:</b> 100-120 VAC 50/60Hz Requires a step-down transformer rated for 2kW for operation using 220V mains (not supplied). Cart must be factory-configured for 50Hz operation. Do not plug anything into the VALENT Cart besides the computer and label printers.
<b>Undervoltage &amp; Overvoltage Protection</b>	The VALENT Cart is protected from undervoltage /overvoltage conditions by internal relays built into the inverter / charger which will limit input voltage to 85-140VAC. Operation is prevented if input voltage is outside the specified range.