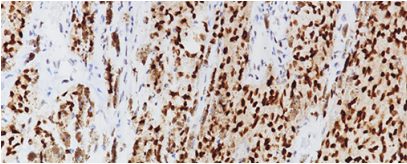




**BIOCARE**  
M E D I C A L

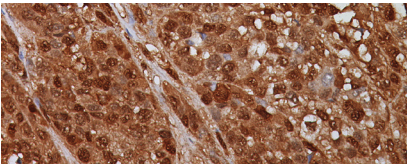
# Key Antibodies For Dermatopathology

## Top Rated Skin Antibodies



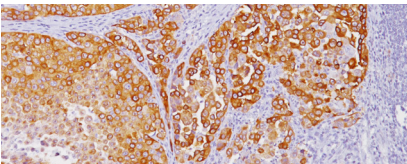
### PRAME [EPR20330]

PRAME is currently being investigated as a novel diagnostic marker with ongoing clinical trials that include multiple myeloma, breast cancer, pancreatic cancer, brain cancer.



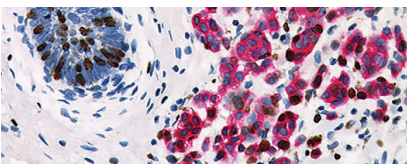
### S100 Protein [15E2E2]

The S100 Protein Cocktail antibody stains melanocytes, schwannomas, peripheral neural tissue, astrocytes, benign and malignant melanomas and their metastases.



### Mart-1 Cocktail











MART-1 antibody recognizes a subcellular fraction found in melanosomes. The antibody labels melanomas and tumors showing melanocytic differentiation.



### Pan Melanoma + Ki-67

Pan Melanoma (MART-1 + Tyrosinase) + Ki-67 aids to identify the proliferation rate of melanocytic lesions in cases with sparse melanocytes, dense lymphocytic infiltrates or melanocytes mixed with fibroblasts.

# Key Antibodies for Skin Pathology

Product Name	Source	Clone	Catalog Number
Mast Cell Trypsin [AA1]		AA1	ACI; API; OPAL; ALI; AVI; 3277
INSM1 [BLR272L]		BLR272L	ACI; API; AVI; ALI 3299
CD39 [EPR20627]		EPR20627	ACI; API; OPAL; ALI; AVI; 3283
Adipophilin		Polyclonal	ACI; API; 3138
HMB45 + MART-1 + Tyrosinase		HMB45 + M2-7C10/M2-9E3 + T311	CM; PM; IPI; VP; OPAL; ALI 165
IFNG [IFNG/3996R]		IFNG/3996R	ACI; API; OPAL; AVI 3266
Microphthalmia Transcription Factor		34CA5	CM; PM 423
Nerve Growth Factor Receptor (RM)		EP31	ACI 369
Pan Melanoma + Ki-67	 	M2-7C10/M2-9E3 + T311 + SP6	PM; OPAL 362DS
pHH3 (RM)		BC37	ACI; API 3130
SOX10		BC34	ACI; API; IPI; AVI; OPAL; ALI; AVI 3099
CD34		QBEnd/10	CM; PM; IP; OPAL; ALI; AVI 084
Cytokeratin [AE1] LMW		AE1	PM 081
Factor XIIIa		E980.1	CM; PM; IP; OPAL; ALI; AVI 357
HMB45		HMB45	CM; PM; IP; OPAL; ALI; AVI 057
MART-1 + Tyrosinase + pHH3	 	BC37, M2-7C10 + M2-9E3, T311	API 3186
MART-1 + Tyrosinase + SOX10		BC34, M2-7C10 + M2-9E3, T311	API 3165
Mart-1 Cocktail		M2-7C10 + M2-9E3,	CM; PM; IP; OPAL; ALI 077
Melanoma Cocktail		HMB45 + M2-7C10 + M2-9E3	CM; PM; VP; AVI 078
p16 + PRAME	 	EPR20330 + BC42	API; ALI; OPAL 3256DS
PRAME [EPR20330]		EPR20330	ACI; API; OPAL; ALI; AVI 3252
S100 Protein [4C4.9] (M)		4C4.9	ACI; API; ALI; AVI; OPAL 3237
Melan A		A103	ACI; API; OPAL; ALI; AVI 3114
MLH-1		G168-15	CM; PM; IPI; AVI; OPAL; ALI 220
MSH2		FE11	CM; PM; AVI; OPAL; ALI 219
MSH6		44	CM; PM; IPI; AVI; OPAL; ALI 265
PMS2		A16-4	CM; PM; IPI; AVI; OPAL; ALI 344
MLH-1 [BC23]		BC23	ACI; API; AVI 3214
MSH6 [BC19]		BC19	ACI; API; AVI 3215
HHV-8		13B10	ACA; APA; OPAA; AVA; ALA 3290