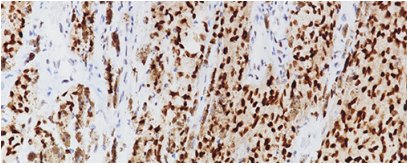




BIOCARE
M E D I C A L

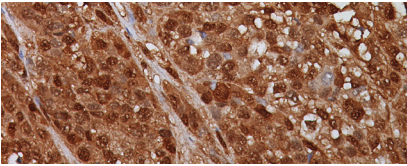
Key Antibodies For Dermatopathology

Top Rated Skin Antibodies



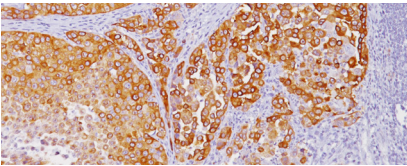
PRAME [EPR20330]

PRAME is currently being investigated as a novel diagnostic marker with ongoing clinical trials that include multiple myeloma, breast cancer, pancreatic cancer, brain cancer.



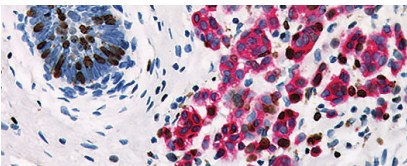
S100 Protein [15E2E2]

The S100 Protein Cocktail antibody stains melanocytes, schwannomas, peripheral neural tissue, astrocytes, benign and malignant melanomas and their metastases.



Mart-1 Cocktail







MART-1 antibody recognizes a subcellular fraction found in melanosomes. The antibody labels melanomas and tumors showing melanocytic differentiation.



Pan Melanoma + Ki-67

Pan Melanoma (MART-1 + Tyrosinase) + Ki-67 aids to identify the proliferation rate of melanocytic lesions in cases with sparse melanocytes, dense lymphocytic infiltrates or melanocytes mixed with fibroblasts.

Key Antibodies for Skin Pathology

Product Name	Source	Clone	Catalog Number
Adipophilin		Polyclonal	ACI; API; 3138
CD34		QBEnd/10	CM; PM; IP; OPAl; ALI; AVI 084
CD39 [EPR20627]		EPR20627	ACI; API; OPAl; ALI; AVI; 3283
Cytokeratin [AE1] LMW		AE1	PM 081
Factor XIIIa		E980.1	CM; PM; IP; OPAl; ALI; AVI 357
HHV-8		13B10	ACA; APA; OPAA; AVA; ALA 3290
HMB45		HMB45	CM; PM; IP; OPAl; ALI; AVI 057
HMB45 + MART-1 + Tyrosinase	 ⁴	HMB45 + M2-7C10/M2-9E3 + T311	CM; PM; IPI; VP; OPAl; ALI 165
IFNG [IFNG/3996R]		IFNG/3996R	ACI; API; OPAl; AVI 3266
INSM1 [BLR272L]		BLR272L	ACI; API; AVI; ALI 3299
MART-1 + Tyrosinase + pHH3	 	BC37, M2-7C10 + M2-9E3, T311	API 3186
MART-1 + Tyrosinase + SOX10		BC34, M2-7C10 + M2-9E3, T311	API 3165
Mart-1 Cocktail		M2-7C10 + M2-9E3,	CM; PM; IP; OPAl; ALI 077
Mast Cell Tryptase [AA1]		AA1	ACI; API; OPAl; ALI; AVI; 3277
Melan A		A103	ACI; API; OPAl; ALI; AVI 3114
Melanoma Cocktail		HMB45 + M2-7C10 + M2-9E3	CM; PM; VP; AVI 078
Microphthalmia Transcription Factor		34CA5	CM; PM 423
MLH-1		G168-15	CM; PM; IPI; AVI; OPAl; ALI 220
MLH-1 [BC23]		BC23	ACI; API; AVI 3214
MSH2		FE11	CM; PM; AVI; OPAl; ALI 219
MSH6		44	CM; PM; IPI; AVI; OPAl; ALI 265
MSH6 [BC19]		BC19	ACI; API; AVI 3215
Nerve Growth Factor Receptor (RM)		EP31	ACI 369
p16 + PRAME	 	EPR20330 + BC42	API; ALI; OPAl 3256DS
Pan Melanoma + Ki-67	 ³ 	M2-7C10/M2-9E3 + T311 + SP6	PM; OPAl 362DS
pHH3 (RM)		BC37	ACI; API 3130
PMS2		A16-4	CM; PM; IPI; AVI; OPAl; ALI 344
PRAME [EPR20330]		EPR20330	ACI; API; OPAl; ALI; AVI 3252
S100 Protein [4C4.9] (M)		4C4.9	ACI; API; ALI; AVI; OPAl 3237
SOX10		BC34	ACI; API; IPI; AVI; OPAl; ALI; AVI 3099