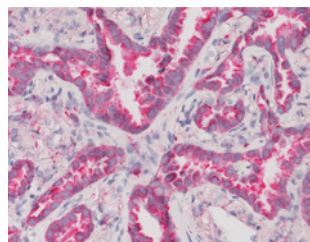


Rabbit Monoclonal Antibodies

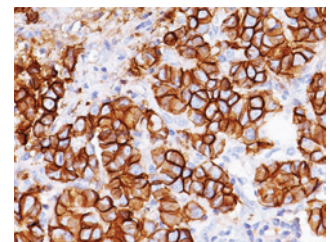


The Confidence of Mouse Specificity with Rabbit Sensitivity

Biocare Medical is pleased to highlight our current menu of rabbit monoclonal antibodies as a complement to our existing line of exceptional IHC reagents. Studies have shown that, due to the diverse immune response of the rabbit species, rabbit monoclonal antibodies recognize many antigens that are not immunogenic in mice. This results in increased sensitivity with no apparent loss of specificity when compared with their mouse monoclonal counterparts. In addition, the monoclonal properties provide improved lot-to-lot consistency and less potential background staining vs. rabbit polyclonal antibodies.



Lung adenocarcinoma stained with Napsin A*



Breast carcinoma stained with E-Cadherin*

Ordering Information

Individual Antibodies	Status	Clone	Cat. No.
ALDH1a1	IVD	EP1933Y	CME 351
Arginase-1	IVD	EPR6672(B)	ACI 3058; API 3058
c-erbB-2/HER2	ASR / RUO	EP1045Y	ACA 342; APA 342
c-Myc	IVD	Y69	CME 415; PME 415
CD117/c-kit	IVD	Y145	CME 296; PME 296
CD3	IVD	E272	CME 324; PME 324
CD5	IVD	SP19	CRM 328; PRM 328
CD8	IVD	SP16	CRM 311; PRM 311
CD99	IVD	EPR3097Y	CME 392; PME 392
Cytokeratin 5	IVD	EP1601Y	CME 430; PME 430
Cytokeratin 7	IVD	BC1	CRM 339; PRM 339
COX-2	IVD	SP21	CRM 306; PRM 306
Cyclin D-1	IVD	SP4	CRM 307; PRM 307
Cyclin D-1	IVD	EP12	CME 432; PME 432
E-Cadherin	IVD	EP700Y	ACI 3012; API 3012
ER (Estrogen Receptor)	ASR / RUO	SP1	ACA 301; APA 301
HIF-1 alpha	IVD	EP1215Y	CME 349
Ki-67	IVD	SP6	CRM 325; PRM 325
MUM-1	IVD	BC5	CRM 352; PRM 352
Napsin A	IVD	BC15	ACI 3043; API 3043
Nerve Growth Factor Receptor (NGFR)	RUO	EP1039Y	CME 369; PME 369
p53	IVD	Y5	CME 298; PME 298
Phospho – EGFR	RUO	EP774Y	PME 300
Progesterone Receptor	ASR / RUO	SP2	ACA 302; APA 302
Prostate Specific Antigen	IVD	EP1588Y	CME 390; PME 390
Smooth Muscle Actin	IVD	C04018	CME 305; PME 305
VEGF	RUO	EP1176Y	CME 356; PME 356
Vimentin	IVD	SP20	CRM 312; PRM 312

1. Rossi S, et al. Am J Clin Pathol. 2005 Aug;124(2):295-302. 2. Rhodes A, et al. Am J Clin Pathol. 2010 Oct;134(4):621-32.