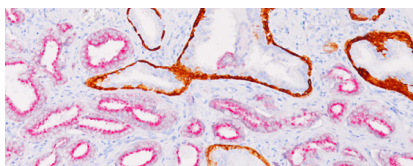




BIOCARE
M E D I C A L

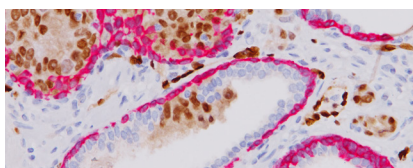
Key Antibodies For Prostate Pathology

Top Rated Prostate Antibodies



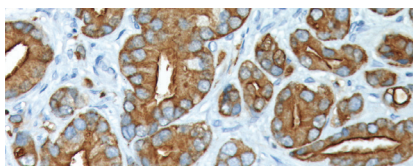
CK HMW + p63 + AMACR (RM)

CK HMW [34βE12], p63, and AMACR may be useful in the evaluation of normal prostate glands, prostatic intraepithelial neoplasia (PIN) and prostatic adenocarcinoma.



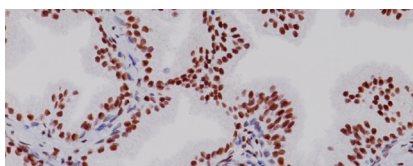
ERG-2™ (ERG + CK5)

There is a strong concordance of ERG positive prostatic intraepithelial neoplasia (PIN) in ERG positive carcinoma with 99.9% specificity.



Prostate Specific Antigen (PSA)
















PSA can be used as a screening marker for differentiating high grade prostate adenocarcinoma from high grade urothelial carcinoma.



Androgen Receptor

The androgen receptor (AR) antibody is highly specific and does not cross-react with estrogen, progesterone or glucocorticoid receptors.

Key Antibodies for Prostate Pathology

Product Name	Source	Clone	Catalog Number
CK HMW + p63 + AMACR (RM)	 ²	34βE12 + 4A4 + 13H4	API; IPI; 3154
ERG-2™ (ERG + CK5)		9FY + EP42	API 437DS
Prostate Specific Antigen (PSA) (RM)		EP109	CME; PME 390
Androgen Receptor		AR441	ACI; API 109
c-Myc (RM)		EP121	CME; PME 415
NKX3.1		Polyclonal	CP; PP; AVI 422
p63		4A4	CM; PM; VP; IP 163
Claudin-4		3E2C1	ACI; API 3121
PTEN (Tumor Suppressor)		6H2.1	CM; PM; AVI 278
PSAP [rACPP/1338]		rACPP/1338	ACI; API; OPAL; AVI; ALI 3263
P504S		Polyclonal	ACA; API; APA; AVA 200
Prostate Cocktail, 2X		XM26/LL002 + 4A4	IP; PM 364
P504S, 2X		Polyclonal	PP; IP 365
LMO2 [SP51]		SP51	ACI; API 3262
ERG		9FY	PM; CM; VP 421