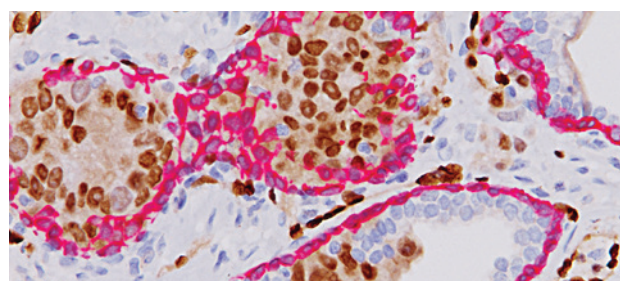


Prostate Focused IHC



Expand Your Arsenal

Prostate cancer remains the leading cancer among men in the United States with 238,590 newly diagnosed cases and 29,720 deaths in 2012. The number of new cases of prostate cancer has decreased by 1.9% per year from 2000 to 2009 and the number of deaths from prostate cancer has decreased significantly by 3.5% per year from 1994 to 2009.¹ This has been achieved by advancements in detection, diagnosis, and treatment of the disease. Biocare Medical continues to be the leader in prostate focused IHC by offering a full menu of innovative primary antibodies, antibody cocktails, Multiplex IHC™ and our newly released line of Supernova antibodies.



ERG-2 (ERG (DAB) + CK5 (FR)) in prostate cancer and PIN

Ordering Information

Single Antibodies	Source	Clones	Status	Cat. No.
Androgen Receptor		AR441	RUO	PM 109, CM 109
AMACR (RM)		13H4	ASR	APA 3024
c-Myc		Y69	IVD	PME 415; CME 415
Cytokeratin 5		XM26	IVD	PM 234; CM 234
Cytokeratin 5 (RM)		EP1601Y	IVD	PME 430; CME 430
Cytokeratin HMW		34βE12	IVD	PM 127; CM 127
ERG		9FY	IVD	PM 421; CM 421
NKX3.1		Poly	IVD	PP 422; CP 422
p40 (M)		BC28	IVD	API 3066; ACI 3066
P504S		Poly	ASR	APA 200; ACA 200
p63		4A4	IVD	PM 163; CM 163
Prostate Specific Antigen		EP1588Y	IVD	PME 390; CME 390
Cocktails	Source	Clones	Status	Cat. No.
CK5 + p63	 + 	XM26 + 4A4	IVD	PM 235
Cytokeratin 5/14	 + 	XM26/LL002	IVD	API 3025; ACI 3025
HMW CK + p63	 + 	XM26/LL002 + 4A4	IVD	PM 210; CM 210
Multiplex IHC	Source	Clones	Status	Cat. No.
CK5/14 + p63 + P504S	 + 	XM26/LL002 + 4A4 + Poly	RUO	PPM 225DS
ERG + AMACR	 + 	9FY + 13H4	RUO	APR 3013DS
ERG-2™ (ERG + CK5)	 + 	9FY + EP1601Y	IVD	API 437DS
PIN Cocktail (p63 + P504S)	 + 	Poly + 4A4	RUO	PPM 201
Supernova*	Source	Clones	Status	Cat. No.
AMACR (RM), 2X		13H4	ASR	APA 3016
AMACR (RM), 3X		13H4	ASR	APA 3055
CK HMW [34βE12], 3X		34βE12	IVD	API 3056
Cytokeratin 5/14, 2X		XM26/LL002	IVD	API 3026
ERG (M), 2X		9FY	IVD	API 3017
P504S-2X		Poly	ASR	PP 365
P504S, 3X		Poly	ASR	APA 3054
p63-2X		4A4	IVD	PM 366
p63, 3X (Prostate)		4A4	IVD	API 3057
Prostate Cocktail - 2X (CK5/14 + p63)		XM26/LL002 + 4A4	IVD	PM 364

*Supernova predilutes contain a high antibody concentration and have been designed to be incubated separately with a shortened incubation time or combined by the user to make their own laboratory validated test.