

RET (10q11.21) Break Apart Orange/Green

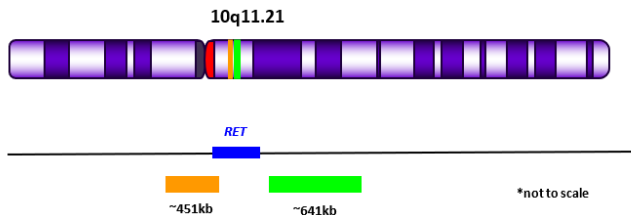
FISH Probe
902-OPPR7334-020322

Catalog Number: **OPPR7334 T30**
Description: **Prediluted FISH Probe**

Intended Use:
For Research Use Only. Not for use in diagnostic procedures.

Summary & Explanation:
The RET (10q11.21) Break Apart FISH probe is a dual color probe, designed to detect chromosomal rearrangements involving the RET proto-oncogene (10q11.21). The RET proto-oncogene encodes a tyrosine kinase receptor and under normal conditions, it functions as a signaling molecule involved in cellular growth and differentiation. Chromosomal rearrangements involving RET were initially identified in papillary thyroid carcinoma (1). However, RET gene rearrangements have been identified in Non-Small-Cell Lung Cancer (NSCLC) patients (2). RET gene rearrangements in NSCLC result in a novel gene fusion event involving RET and KIF5B gene (3). This genetic aberration is believed to play a role in oncogenesis in NSCLC (3). RET gene rearrangements can be identified using Fluorescence in situ Hybridization (FISH).

Principle of Procedure:
The ~451kb probe labeled in orange flanks the centromeric end of the RET gene and the ~641kb probe labeled in green flanks the telomeric end of the RET gene. When the probe is hybridized to a normal cell it will show two orange/green (yellow) fusion signal patterns. A cell containing a rearrangement of the RET gene may show one orange and one green signal and orange/green (yellow) fusion signal.



Species Reactivity: Human

Known Application: Fluorescence In-situ Hybridization (FISH) on formalin-fixed paraffin-embedded (FFPE) tissues.

Supplied As: Probe in hybridization buffer

Reconstitution, Dilution and Mixing:

RET (10q11.21) Break Apart Orange/Green FISH Probe is provided ready-to-use.

Bring the vial to room temperature 30 minutes prior to EACH use and MIX WELL by shaking vigorously by hand for 3 minutes in different orientations. If vial volume is 1mL or less, mix using a pipette for 20 aspirations.

Materials and Reagents Required but Not Provided:
Reagents and materials, such as detection kits and ancillary reagents are not provided. Refer to the ONCORE Pro FISH Kit (OPPR6064K) and the ONCORE Pro ISH Dewax Kit (OPRI6020K) datasheets. DAPI (120ng/mL) solution is also required for counterstaining. Call Technical Support for additional information on reagents and instrument accessories.

Storage and Stability:
Store probe at -20°C and away from light. The product is stable to the expiration date printed on the label, when stored under these conditions. Do not use after expiration date.

Instructions for Use:
OPPR7334 is intended for use with the ONCORE Pro. Refer to the User Manual for specific instructions for use. Protocol parameters in the Protocol Editor should be programmed as follows:
Protocol Name: RET BA 2CP
Protocol Template (Description): PathoFISH Template 1
Reagent Name, Time, Temp.: FISHzyme*, 35 min., 37°C

*FISHzyme (OPPR6066) is a part of ONCORE Pro FISH Kit (OPPR6064K).
Incubation time of FISHzyme may be modified based on the tissue type and tissue fixation.

Slides should be baked offline for 1 hour at 60°C prior to loading onto the instrument.

The ONCORE Pro Baking Slides Before Staining setting should be selected and set for 10 min at 60°C to improve tissue retention.
Post ONCORE Pro FISH staining processing:

1. Gently rinse slides in TBS buffer, followed by a gentle rinse in DI water.
2. Place the slide rack in a dark cabinet to air dry.
3. Apply 1-2 drops of Fluoro Care Mounting Media (FP001) under a suitable size coverslip, e.g., 22x40 mm.

Technical Notes:
1. FISH runs should not be delayed as the probe will separate.
2. Biocare Medical Break Apart FISH probes are optimized to provide the best signal performance using optical filters that can accommodate the excitation/emission wavelengths specified below. Using filters outside these spectral specifications may produce sub-optimal results.

| Fluorophore | Excitation (nm) | Emission (nm) |
|-------------|-----------------|---------------|
| GREEN | 490 | 515 |
| ORANGE | 546 | 575 |

Limitations:
This product is provided for Research Use Only (RUO) and is not for use in diagnostic procedures. Suitability for specific applications may vary and it is the responsibility of the end user to determine the appropriate application for its use.

RET (10q11.21) Break Apart Orange/Green

FISH Probe

902-OPPR7334-020322

Precautions:

1. This product contains formamide and fluorescent dyes that may be hazardous to your health. The SDS is available upon request and is located at <http://biocare.net>.
2. Specimens, before and after fixation, and all materials exposed to them should be handled as if capable of transmitting infection and disposed of with proper precautions. Never pipette reagents by mouth and avoid contacting the skin and mucous membranes with reagents and specimens. If reagents or specimens come in contact with sensitive areas, wash with copious amounts of water (4).

**Health Hazard****Irritant****Corrosive (to skin)****Technical Support:**

Contact Biocare's Technical Support at 1-800-542-2002 for questions regarding this product.

References:

1. Tsuta, K., T. Kohno, A. Yoshida, Y. Shimada, H. Asamura, K. Furuta, and R. Kushima. "RET-rearranged non-small-cell Lung Carcinoma: A Clinicopathological and Molecular Analysis." *British Journal of Cancer* 110 (2014): 1571-578.
2. Bos, Marc, Masyar Gardizi, Hans- Ulrich Schildhaus, Reinhard Buettner, and Juergen Wolf. "Activate RET and ROS: Two New Driver Mutations in Lung Adenocarcinoma." *Translational Lung Cancer Research* 2.2 (2013): 112-21.
3. Ju, Y. S., W.-C. Lee, J.-Y. Shin, S. Lee, T. Bleazard, J.-K. Won, Y. T. Kim, J.-I. Kim, J.-H. Kang, and J.-S. Seo. "A Transforming KIF5B and RET Gene Fusion in Lung Adenocarcinoma Revealed from Whole-genome and Transcriptome Sequencing." *Genome Research* (2012): 436-45.
4. Clinical and Laboratory Standards Institute (CLSI). *Protection of Laboratory workers from occupationally Acquired Infections; Approved Guideline-Fourth Edition* CLSI document M29-A4 Wayne, PA 2014.