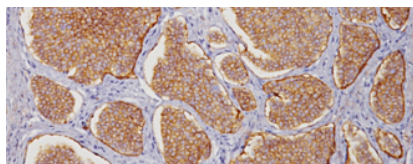




BIOCARE
M E D I C A L

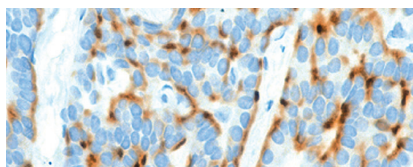
Key Antibodies For Neuropathology

Top Rated Neuropathology Antibodies



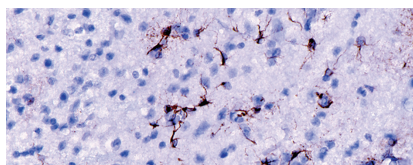
CD56

CD56 is expressed in a variety of normal and abnormal tissues including skin, neuroblastoma, neurons, astrocytes, Schwann cells, and natural killer (NK) cells.



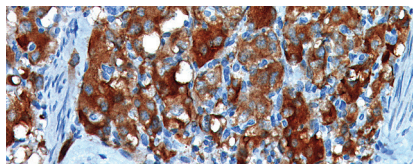
Chromogranin A

Chromogranin A may be a useful marker for carcinoid tumors, pheochromocytomas, paragangliomas and other neuroendocrine tumors.



Glial Fibrillary Acidic Protein (GFAP)















GFAP may be useful for distinguishing neoplasms of astrocytic origin. GFAP may also be useful in differentiating gliomas from metastatic lesions in the brain.



Synaptophysin

Synaptophysin antibody clone 27G12 is a reliable marker for neuroendocrine and neuronal neoplasms, as well as their normal counterparts.

Key Antibodies for Neuropathology

Product Name	Source	Clone	Catalog Number
ATRX		N/A	ACI; API 3251
Calcitonin		N/A	CP; PP 072
CD56		BC56C04	CM; PM 164
Chromogranin A		LK2H10 + PHE5	ALI; CM; PM; IP; OPAI 010
Epidermal Growth Factor Receptor		H11	CM; 063
Glial Fibrillary Acidic Protein (GFAP(M))		GA-5	CM; PM 065
Glial Fibrillary Acidic Protein		N/A	CP; PP 040
H3K27me3 [C36B11]		C36B11	ACI; ALI; API; AVI; OPAI 3249
IDH1 R132H [IHC132]		IHC132	ACI; API 3253
Microglia (Iba1)		N/A	CP; 290
PAN TRK [RM423]		RM423	ACI; ALI; API; AVI; OPAI 3267
ROS1 [EPMGHR2]		EPMGHR2	ACI; ALI; API 3240
Synaptophysin		27G12	ACI; API; AVI; IP; OPAI 371
p27 KIP1 [Y236]		Y236	ACI; API; OPAI; ALI; AVI; 3282