

# NEOPATH<sup>PRO</sup>

High-Capacity Staining Simplified



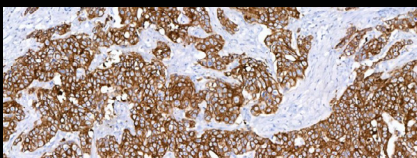
**BIOCARE**  
MEDICAL

# NEOPATH<sup>PRO</sup>

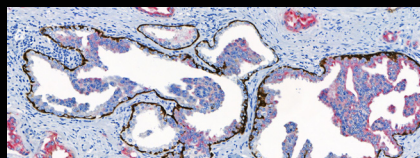


## Engineered to Flex With Your Needs

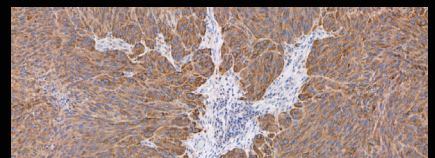
NeoPATH Pro sets a new standard in automated advanced staining for IHC, ISH, and FISH. Designed to meet your laboratory's current staining needs while adapting to future demands, this advanced staining platform delivers high-capacity throughput, optimized reagents, and intuitive automation. Innovative features such as independent slide positions, integrated slide scanning, and AI assisted error prevention streamline workflows and enhance diagnostic confidence.



**AE1/AE3 HRP**  
Colon Adenocarcinoma, 10X



**CK HMW + p63 + AMACR (RM)**  
Prostate, 20X



**MART-1 HRP**  
Melanoma, 10X

# IHC, ISH and FISH Automated Staining

## Built for Efficiency

NeoPATH Pro enhances your lab productivity with flexible loading and unloading of slides, mixing and matching of protocols, processing up to 126 slides per day.

42 independent slide positions provide the highest active staining capacity of any fully automated IHC, ISH and FISH instrument on the market.

56 reagent capacity maximizes on-board reagents, reduces hands-on time and improves workflow.

## Rooted in Quality

Optimized NeoPATH Pro reagents provide sharp and well-defined slide staining.

Innovative technologies such as integrated slide scanning and LIS/LIMS compatibility streamline workflows. AI backed camera helps prevent user error by checking correct slide positioning.

Temperature-controlled reagent positions (18°C-22°C) minimize evaporation, extend reagent life, and reduce intervention for greater efficiency and consistency.

## Designed for Simplicity

Highly intuitive software interface enhances data traceability and reporting while ensuring seamless reagent and lot tracking.

Dedicated bulk reagent probes and automated cleaning cycles lead to reduced user maintenance.

Staining modules do not require plastic slide covers, simplifying workflows.

Simultaneous Multiplex protocols increase diagnostic data while preserving precious tissue.



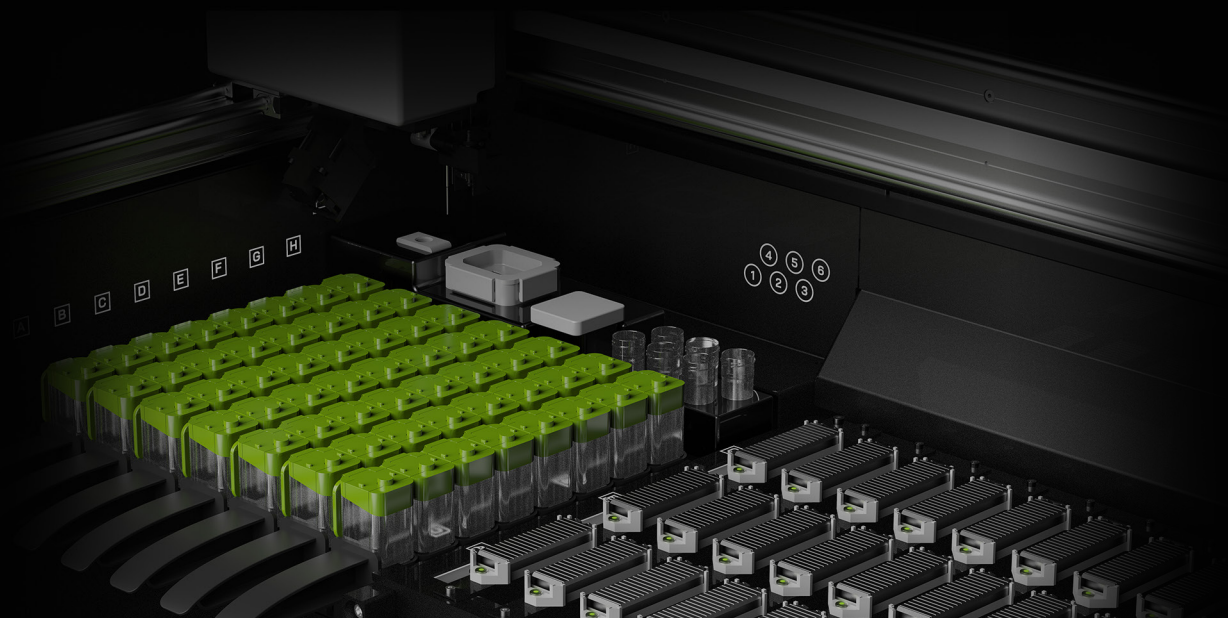
**High-Capacity  
Throughput**



**Trusted  
Antibodies**



**Intuitive Instrument &  
Software Interface**

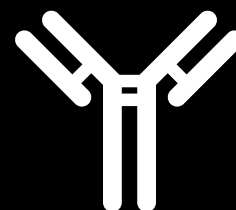




Benchtop



Floor-standing



300+

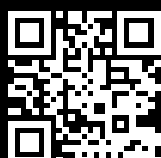
Antibodies

# NEOPATH<sup>PRO</sup>

## System Specifications

Applications	IHC, ISH, FISH
Slide Capacity	42 Slides
Reagent Rack	7 Reagent Racks, each consists of 8 Vials (Total 56 vials)
Bulk Reagents	6 Bulk Containers (Max volume: 2000 mL each)
Carboys & Waste separation	Wash Buffer (25 L), Cleaning Solution (25 L) Waste separation: Hazardous waste (25 L) and Non-Hazardous waste (25 L)
Instrument Weight	330.7 lbs (150 kg)
Instrument Weight (with Dock Accessory)	573.2 lbs (260 kg)
Instrument Dimensions	(Door Closed - W x H x D) 54.3 in x 31.5 in x 29.5 in / 138 cm x 80 cm x 75 cm (Door Open - W x H x D) 54.3 in x 51.2 in x 29.5 in / 138 cm x 130 cm x 75 cm (Setup space with PC) W 77.9 in / W 198 cm
Instrument Dimensions (with Dock Accessory)	(Door Closed - W x H x D) 55.2 in x 64.2 in x 29.5 in / 140.2 cm x 163.2 cm x 75 cm (Door Open - W x H x D) 55.2 in x 82.7 in x 29.5 in / 140.2 cm x 210 cm x 75 cm (Setup space with PC) W 78.8 in / W 200.2 cm
Electrical Requirements	Voltage : 100 – 240 VAC Frequency: 50 – 60 Hz
UPS Requirements	120VAC UPS: Power Capacity (VA): 1500 VA - Voltage Required: AC 100/110/120 V 220VAC UPS: Power Capacity (VA): 2000 VA - Voltage Requirements: 220/230/240 VAC

## For In Vitro Diagnostic Use



Instrument  
Information



Antibody  
Menu

800.799.9499  
60 Berry Drive  
Pacheco, CA 94553