

# NEOPATH<sup>PRO</sup>

High-Capacity Staining Simplified



**BIOCARE**  
MEDICAL

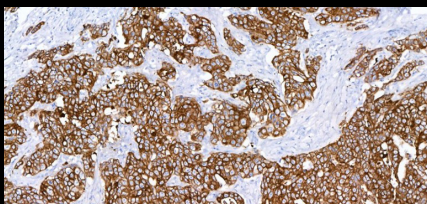
# NEOPATH<sup>PRO</sup>

---

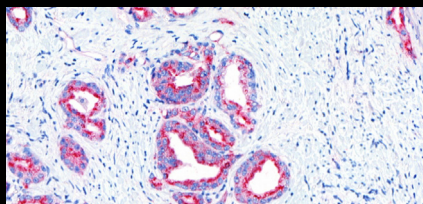


## Engineered to Flex With Your Needs

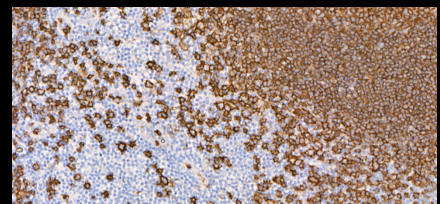
At Biocare Medical, our foundation is rooted in the development of innovative reagents that ensure consistent quality and performance. NeoPATH Pro is designed to deliver on your lab's current requirements alongside innovative capabilities and menu expansion to comfortably support your future growth. NeoPATH Pro is setting a new benchmark in productivity while delivering the staining quality expected from Biocare antibodies and detection systems.



AE1/AE3 HRP  
Colon Adenocarcinoma, 10X



P504S AP  
Prostate, 20X



CD20 HRP  
Tonsil, 20X

# IHC, ISH and FISH Automated Stainer

## Built for Efficiency

NeoPATH Pro enhances lab productivity with flexible loading and unloading of slides, mixing and matching of protocols, [processing up to 126 slides per day](#).

[42 individual slide modules](#) provides the highest active staining capacity of any fully automated IHC, ISH and FISH instrument on the market.

[56 reagent capacity](#) maximizes on-board reagents, reduces hands-on time and improves workflow.



High Capacity  
Throughput

## Rooted in Quality

Optimized NeoPATH Pro reagents ensure sharp and well-defined [full slide staining](#).

[Innovative technologies](#) such as integrated slide scanning and LIS/LIMS compatibility streamline workflows. AI backed camera helps prevent user error by checking correct slide position.

Temperature-controlled reagent positions (18°C-22°C) minimize evaporation, extend reagent life, and reduce intervention for [greater efficiency](#).



Trusted  
Ready-to-Use Antibodies

## Designed for Simplicity

[Intuitive software interface](#) enhances traceability and reporting, ensuring seamless reagent and lot tracking.

Dedicated bulk reagent probes and [automated cleaning](#) cycle ensures reduced user maintenance.

Each slide is placed on its own independent staining platform. [No need for plastic slide covers or post-run slide cleaning](#).

Simultaneous [Multiplex protocols](#) increase diagnostic data while preserving precious tissue.



Intuitive Instrument &  
Software Interface



Benchtop



Floor-standing



300+

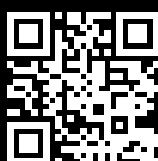
Antibodies

# NEOPATH<sup>PRO</sup>

## System Specifications

|   |  |
|---|--|
| Applications                                | IHC, ISH, FISH   |
| Slide Capacity                              | 42 Slides  |
| Reagent Rack                                | 7 Reagent Racks, each consists of 8 Vials (Total 56 vials)   |
| Bulk Reagents                               | 6 Bulk Containers (Max volume: 2000 mL each)   |
| Carboys & Waste separation                  | Wash Buffer (25 L), Cleaning Solution (25 L)<br>Waste separation: Hazardous waste (25 L) and Non-Hazardous waste (25 L)  |
| Instrument Weight                           | 330.70 lbs (150 kg)  |
| Instrument Weight (with Dock Accessory)     | 573.20 lbs (260 kg)  |
| Instrument Dimensions                       | (Door Closed - W x H x D) 54.3 in x 31.5 in x 29.5 in / 138 cm x 80 cm x 75 cm<br>(Door Open - W x H x D) 54.3 in x 51.2 in x 29.5 in / 138 cm x 130 cm x 75 cm<br>(Setup space with PC) W 77.9 in / W 198 cm          |
| Instrument Dimensions (with Dock Accessory) | (Door Closed - W x H x D) 55.2 in x 64.2 in x 29.5 in / 140.2 cm x 163.2 cm x 75 cm<br>(Door Open - W x H x D) 55.2 in x 82.7 in x 29.5 in / 140.2 cm x 210 cm x 75 cm<br>(Setup space with PC) W 78.8 in / W 200.2 cm |
| Electrical Requirements                     | Voltage : 100 – 240 VAC Frequency: 50 – 60 Hz  |
| UPS Requirements                            | 120VAC UPS: Power Capacity (VA): 1500 VA - Voltage Required: AC 100/110/120 V<br>220VAC UPS: Power Capacity (VA): 2000 VA - Voltage Requirements: 220/230/240 VAC  |

## For In Vitro Diagnostic Use



Instrument  
Information



Antibody  
Menu

800.799.9499  
60 Berry Drive  
Pacheco, CA 94553