

ISH

Powered by HCR™ Pro

Largest Automated ISH Menu

Turnaround in as Little as 5.5 Hours



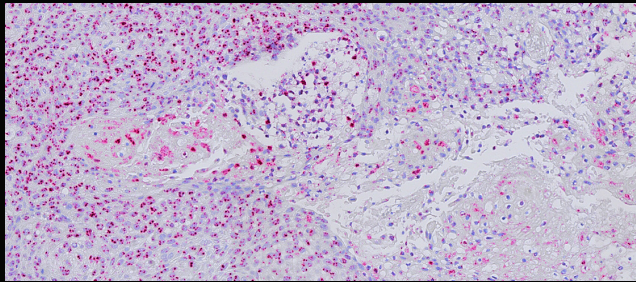
EMPIRE
GENOMICS

a Biocare Medical Company

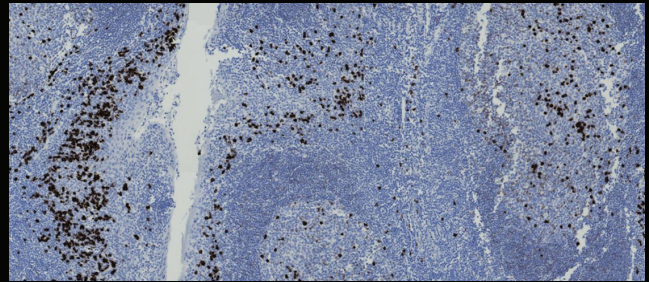
For Research Use Only. Not For Use in Diagnostic Procedures.

NEOPATH^{PRO}

The NeoPATH Pro streamlines high-volume NISH workflows with advanced features including 42-slide capacity, 56 reagent positions, batch access, and real-time data tracking, all in one powerful platform. Designed with direct input from the lab, it delivers clear, consistent staining while maximizing throughput when paired with HCR™ Pro RNA-ISH kits incorporating state-of-the-art HCR™ HiFi Probes. Flexible in design, whether benchtop or freestanding, the NeoPATH Pro empowers your team to work smarter and faster, setting a new standard in automated ISH technology.



HPV High Risk Probe, Fast Red Chromogen, FFPE Tissue



KAPPA Light Chain Probe, DAB Chromogen, FFPE Tissue

The Fastest Path to ISH Results, Backed by the Largest Menu



5.5 Hour Turnaround

Making Your Lab Life Simple

- Spend Less Time Waiting and More Time on What Matters
- Same-Day Results Without Extending Your Shift
- More Runs, Less Stress — Automated From Start to Finish



Largest Automated ISH Menu

NeoPATH Pro Specific Reagents

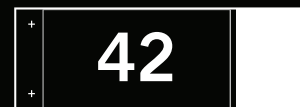
- RTU NISH Reagents Optimized Exclusively for NeoPATH Pro
- CoverGuard Technology Eliminates the Need for Covertiles
- The Largest ISH Probe Menu of Any Supplier

HCR[™]
AUTOMATED

Powered by HCR Pro Chemistry

A Significant Advancement in RNA-ISH

- HCR HiFi Probes Enable High Specificity, Low Background
- Single-Step Amplification Simplifies the Workflow
- Optimized for Diverse FFPE Sample Types



High Capacity

For Even The Most Demanding Laboratories

- Up to 42 Randomized Slides Per Run
- 20% Greater Slide Capacity Than Comparable Systems
- 56 Temperature-Controlled Reagent Slots

For Research Use Only. Not For Use in Diagnostic Procedures.

Instrument Information	Product Code	Description	Quantity
NeoPath Pro Automated Stainer	NPP0001	Bench Top Instrument	1 Unit
NeoDock	NPP20169	Instrument Accessory	1 Unit
Probe Name	SKU	Tests	
NISH ALBUMIN Probe	ALBUMIN-20-R-NP	20	
NISH CMV Probe	CMV-20-R-NP	20	
NISH EBER Probe	EBER-20-R-NP	20	
NISH ERBB2 Probe	ERBB2-20-R-NP	20	
NISH HPV 6 Probe	HPV6-20-R-NP	20	
NISH HPV 11 Probe	HPV11-20-R-NP	20	
NISH HPV 16 Probe	HPV16-20-R-NP	20	
NISH HPV 16/18 Probe	HPV16-HPV18-20-R-NP	20	
NISH HPV 18 Probe	HPV18-20-R-NP	20	
NISH HPV 31/45 Probe	HPV31-HPV45-20-R-NP	20	
NISH HPV 6/11 Probe	HPV6-HPV11-20-R-NP	20	
NISH HPV High Risk Probe (16, 18, 26, 31, 33, 35, 39, 45, 51, 52, 53, 56, 58, 59, 66, 68, 73, 82)	HPV-HR-20-R-NP	20	
NISH HPV Low Risk Probe (6,11,40,42,43,44)	HPV-LR-20-R-NP	20	
NISH Kappa Light Chain Probe	KAPPA-20-R-NP	20	
NISH Lambda Light Chain Probe	LAMBDA-20-R-NP	20	
NISH Negative Control Probe	NNC-20-R-NP	20	
NISH Positive Control Probe	NPC-20-R-NP	20	
Detection Kits	SKU	Tests	
NISH AP Detection Kit	AP-KT-40-R-NP	40	
NISH HRP Detection Kit	HRP-KT-40-R-NP	40	
Chromogen Kits	SKU	Tests	
NISH DAB Kit	DAB-KT-135-R-NP	135	
NISH Red Kit	FR-KT-135-R-NP	135	

NEOPATH PRO



System Specifications

Slide Capacity	42 Slides
Reagent Rack	7 Reagent Racks, each consists of 8 Vials (Total 56 vials)
Bulk Reagents	6 Bulk Containers (Max volume: 2000 mL each)
Carboys & Waste separation	Wash Buffer (25 L), Cleaning Solution (25 L) Waste separation: Hazardous waste (25 L) and Non-Hazardous waste (25 L)
Instrument Weight	330.70 lbs (150 kg)
Instrument Weight (with Dock Accessory)	573.20 lbs (260 kg)
Instrument Dimensions	(Door Closed - W x H x D) 54.33 in x 31.49 in x 29.52 in / 138 cm x 80 cm x 75 cm (Door Open - W x H x D) 54.33 in x 51.18 in x 29.52 in / 138 cm x 130 cm x 75 cm (Setup space with PC) W 77.95 in / W 198 cm
Instrument Dimensions (with Dock Accessory)	(Door Closed - W x H x D) 55.16 in x 64.25 in x 29.53 in / 140.20 cm x 163.20 cm x 75 cm (Door Open - W x H x D) 55.16 in x 82.70 in x 29.53 in / 140.20 cm x 210 cm x 75 cm (Setup space with PC) W 78.78 in / W 200.20 cm
Electrical Requirements	Voltage : 100 – 240 VAC Frequency: 50 – 60 Hz
UPS Requirements	120VAC UPS: Power Capacity (VA): 1500 VA - Voltage Required: AC 100/110/120 V 220VAC UPS: Power Capacity (VA): 2000 VA - Voltage Requirements: 220/230/240 VAC

For Research Use Only. Not For Use in Diagnostic Procedures.



EMPIRE
GENOMICS

a Biocare Medical Company

800.715.5880
3370 Walden Avenue Suite 114
Depew, NY 14043



NIS100
043026