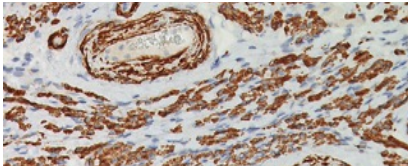




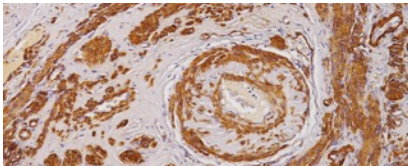
**BIOCARE**  
M E D I C A L

# Key Antibodies For Myositis Pathology

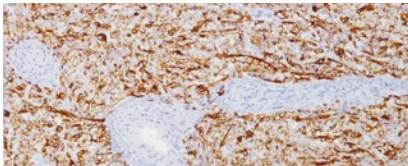
## Top Rated Myositis Antibodies



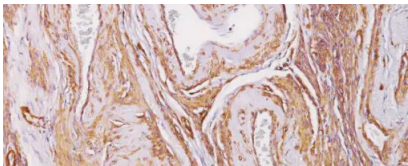
**Smooth Muscle Myosin Heavy Chain**  
SM-MHC is a cytoplasmic structural protein that is a major component of the contractile apparatus in smooth muscle cells. SM-MHC reacts with visceral and vascular smooth muscle cells.



**Smooth Muscle Actin**  
Smooth Muscle Actin clone 1A4 stains smooth muscle cells in vessel walls, gut wall, and myometrium. This antibody helps identify tumors arising from smooth muscle & myoepithelial cells.










**Desmin**  
Desmin clone D33 to be useful in identification of tumors of myogenic origin; it has been shown to react with leiomyosarcomas (smooth muscle) as well as rhabdomyosarcomas (striated muscle).



**Muscle Specific Actin**  
Muscle Specific Actin antibody [HHF35] recognizes muscle specific alpha and gamma actin isomers. It does not react with non-muscle actin.

# Key Antibodies for Myositis Pathology

Product Name	Source	Clone	Catalog Number
Desmin		D33	CM PM IP 036
Vimentin		V9	CM PM IP AVI 048
Muscle Specific Actin		HHF35	CM PM IP 079
Smooth Muscle Myosin Heavy Chain		SMMS-1	CM PM 420
Actin Smooth Muscle		1A4	CM PM IP OPAI 001
Collagen IV		Col 94	CM PM 112
Smoothelin		R4A	CM PM 372