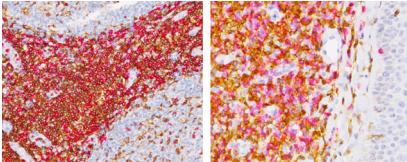




**BIOCARE**  
M E D I C A L

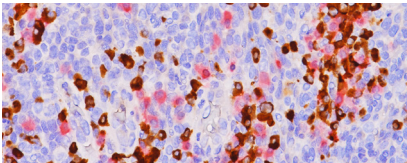
# Key Antibodies For Lymphoma Pathology

## Top Rated Lymphoma Antibodies



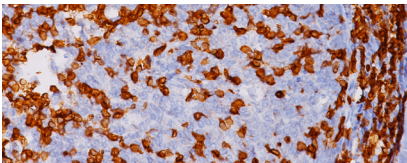
### CD4 + CD8

CD4 is expressed in the majority of T-cell lymphomas. CD8 is found in cortical thymocytes, T-cells and NK cells.



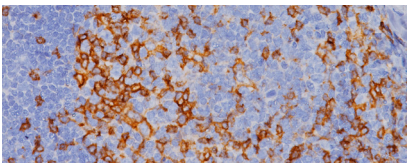
### Kappa (M) + Lambda (P)

Kappa + Lambda light chain counts and ratio may be useful in the identification of certain non-Hodgkin's lymphomas as these malignancies often express a single light chain class.



### CD3 [LN10]



























CD3 is a highly specific and sensitive T-cell lineage marker, except for some aggressive large T-cell lymphomas and CD30 (Ki-1) positive anaplastic large cell lymphomas.



### CD4 [4B12]

CD4 is expressed in the majority of T-cell lymphomas, including mycosis fungoides. CD4 has been used in lymphoma panels that include CD3, CD5, CD8, CD7 and TIA-1.

## Key Antibodies for Lymphoma Pathology

| Product Name           | Source  | Clone                             | Catalog Number                |
|------------------------|---|-----------------------------------|-------------------------------|
| TRBC1                  |    | N/A                               | API; OPAI; ALI; AVI 3280      |
| NPM1                   |    | N/A                               | ACI; API; OPAI; ALI; AVI 3281 |
| CD4 + CD8              |    | 4B12 + SP16                       | API 3157DS                    |
| Kappa (M) + Lambda (P) |    | L1C1 + N/A                        | API 3159DS                    |
| CD3 [LN10]             |    | LN10                              | ACI; API 3152                 |
| CD4 [4B12]             |    | 4B12                              | ACI; API 3148                 |
| CD5 (M)                |    | 4C7                               | CM; PM 099                    |
| CD10                   |    | 56C6                              | CM; PM; IP 129                |
| CD30 (Ki-1)            |    | CON6D/B5                          | CM; PM 346                    |
| CD8 [C8/144B]          |    | C8/144B                           | ACI; API 3160                 |
| CD137 [BLR051F]        |    | BLR051F                           | ACI; API 3264                 |
| SOX11 (M)              |    | SOX11-C1                          | ACI; API 3120                 |
| Cyclin 1 (RM)          |    | SP4                               | CRM; PRM; IPI 307             |
| Pax-5                  |    | BC24                              | CM; PM 207                    |
| CD20                   |    | L26                               | CM; IP; PM 004                |
| CD23                   |    | 1B12                              | CM; PM 100                    |
| CD8 (RM)               |    | SP16                              | CRM; PRM311                   |
| Bcl-6                  |    | LN22                              | CM; PM 410                    |
| ALK                    |    | 5A4                               | ACI; API 3041                 |
| CD3 (RM)               |    | EP41                              | CME; PME 324                  |
| CD57                   |    | NK-1                              | CM; PM 007                    |
| CD15                   |  | MMA                               | CM; PM 029                    |
| CD30 Cocktail          |  | BerH2 + Con6D/B5                  | PM 074                        |
| CD43                   |  | DF-T1                             | CM; PM; IP 005                |
| Pan Lymphoma Cocktail  |  | PD7/26/16 +2B11+ L26 + PS1+ DF-T1 | API 3035                      |
| LM02 [SP51]            |  | SP51                              | ACI; API 3262                 |