

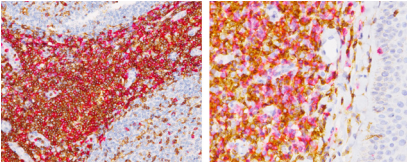


**BIOCARE**  
M E D I C A L

Key Antibodies For

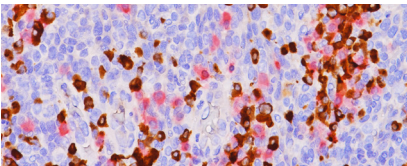
# Lymphoma Pathology

## Top Rated Lymphoma Antibodies



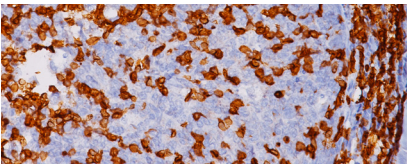
### CD4 + CD8

CD4 is expressed in the majority of T-cell lymphomas. CD8 is found in cortical thymocytes, T-cells and NK cells.



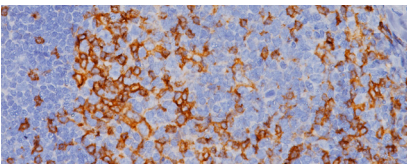
### Kappa (M) + Lambda (P)

Kappa + Lambda light chain counts and ratio may be useful in the identification of certain non-Hodgkin's lymphomas as these malignancies often express a single light chain class.



### CD3 [LN10]

CD3 is a highly specific and sensitive T-cell lineage marker, except for some aggressive large T-cell lymphomas and CD30 (Ki-1) positive anaplastic large cell lymphomas.



### CD4 [4B12]

CD4 is expressed in the majority of T-cell lymphomas, including mycosis fungoides. CD4 has been used in lymphoma panels that include CD3, CD5, CD8, CD7 and TIA-1.

# Key Antibodies for Lymphoma Pathology

Product Name	Source	Clone	Catalog Number
CD4 + CD8		4B12 + SP16	API 3157DS
Kappa (M) + Lambda (P)		L1C1 + N/A	API 3159DS
CD3 [LN10]		LN10	ACI; API 3152
CD4 [4B12]		4B12	ACI; API 3148
CD5 (M)		4C7	CM; PM 099
CD10		56C6	CM; PM; IP 129
CD30 (Ki-1)		CON6D/B5	CM; PM 346
CD8 [C8/144B]		C8/144B	ACI; API 3160
CD137 [BLR051F]		BLR051F	ACI; API 3264
SOX11 (M)		SOX11-C1	ACI; API 3120
Cyclin 1 (RM)		SP4	CRM; PRM; IPI 307
Pax-5		BC24	CM; PM 207
CD20		L26	CM; IP; PM 004
CD23		1B12	CM; PM 100
CD8 (RM)		SP16	CRM; PRM311
Bcl-6		LN22	CM; PM 410
ALK		5A4	ACI; API 3041
CD3 (RM)		EP41	CME; PME 324
CD57		NK-1	CM; PM 007
CD15		MMA	CM; PM 029
CD30 Cocktail		BerH2 + Con6D/B5	PM 074
CD43		DF-T1	CM; PM; IP 005
Pan Lymphoma Cocktail		PD7/26/16 +2B11+ L26 + PS1+ DF-T1	API 3035
LMO2 [SP51]		SP51	ACI; API 3262