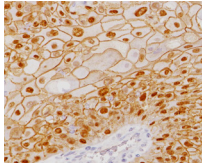
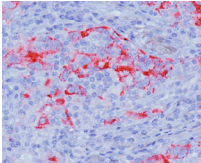




BIOCARE
M E D I C A L

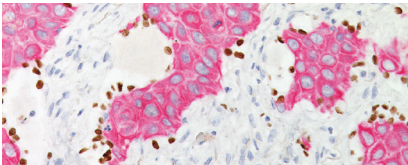
Key Antibodies For Lung Pathology

Top Rated Lung Antibodies



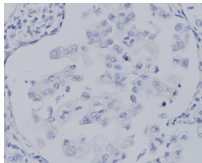
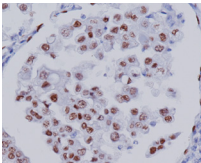
Desmoglein 3 + p40 + Napsin A (RM)

Desmoglein 3 (DSG3) and p40 [BC28] are sensitive and specific lung squamous cell carcinoma (SqCC) markers. p40 has diminished reactivity in lung adenocarcinoma (ADC) compared to p63.



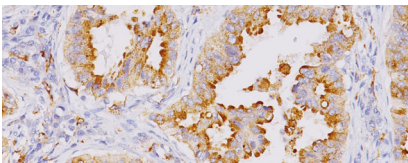
TTF-1 + CK5

Thyroid transcription factor-1 (TTF-1) is a member of the NKX2 family of homeodomain transcription factors. TTF-1 + CK5 is an effective screener for discriminating between lung ADC vs. lung SqCC.



TTF-1 [SPT24]























Thyroid transcription factor-1 TTF-1 [SPT24] is more sensitive than [8G7G3/1] in lung ADC but stains a higher number of lung SqCC.



Napsin A

Studies have shown Napsin A to yield high sensitivity and specificity for primary non-small cell lung adenocarcinoma (NSCLC).

Key Antibodies for Lung Pathology

Product Name	Source	Clone	Catalog Number
Pan TRK [RM423]		RM423	ACI; API; OPAl; AVI; ALI 3267
PCNA [PC10]		PC10	ACI; API; AVI 3255
Desmoglein 3 + p40 + Napsin A (RM)	 	BC11 + BC28 + BC15	API 3132DS
TTF-1 [SPT24]		SPT24	ACI; API 3126
MASH1		24B72D11.1	ACI; API 3131
Ber-EP4 + BG8		Ber-EP4 + F3	API 3112
TTF-1 + Napsin A (RM)	 	8G7G3/1 + BC15	API 3078DS
p40		BC28	ACI; API; AVI; IPI 3066
PD-1		NAT105	ACI; API 3137
Folate Receptor alpha IHC Assay Kit		26B3.F2	BRI; IPI 4006K
TTF-1 + CK5	 	8G7G3/1 EP42	PM 425DS
TIM3 [BLR033F]		BLR033F	ACI; API 3258
STAT6 [YE361]		YE361	ACI; API 3244
p63, 2X (Lung)		4A4	AP1 3070
p63 + TRIM29	 	4A4 + Polyclonal	PPM 427DS
Desmoglein 3		BC11	CM; PM 419
Napsin A		TMU-Ad 02	CM; IPI; PM 388
HHV-8		13B10	ACA; APA; OPAA; AVA; ALA 3290