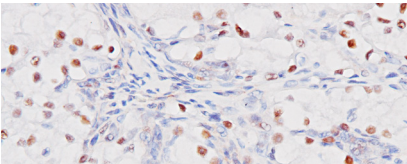




BIOCARE
M E D I C A L

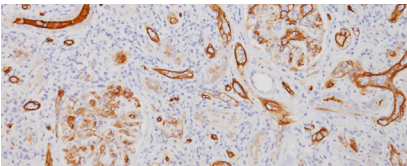
Key Antibodies For Kidney Pathology

Top Rated Kidney Antibodies



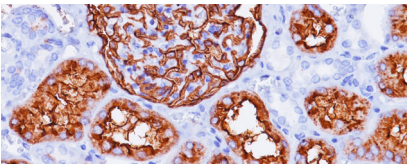
PAX8

PAX8 [BC12] stains nuclei exclusively and does not stain B-cells, nor does it recognize epitopes of pancreatic origin and neuroendocrine cells in stomach and colon.



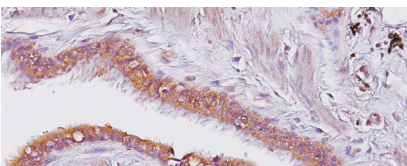
C4d

C4d deposition may be a valuable marker for humoral rejection and is associated with inferior kidney graft outcomes.



CD10









CD10 is expressed in some non-lymphoid tissues such as brush border of kidney. Loss of CD10 is often seen in papillary renal cell carcinomas.



Amyloid A

Amyloid A reacts with native and fixed amyloid fibrils. It also reacts with amyloid deposits including kidney and rectum.

Key Antibodies for Kidney Pathology

Product Name	Source	Clone	Catalog Number
PAX8		BC12	ACI; API; AVI 438
Pan TRK [RM423]		RM423	ACI; API; OPAI; AVI; ALI 3267
C4d (RM)		A24-T	ACI; API 3134
CD10		56C6	CM; PM IP 129
Amyloid A		mc1	CM; PM 125
Amyloid P		N/A	PP 132
AMACR (RM)		13H4	APA 3024
AMACR (RM), 2X		13H4	APA 3016