












Key Antibodies For  
**Lymphoma Cancer**



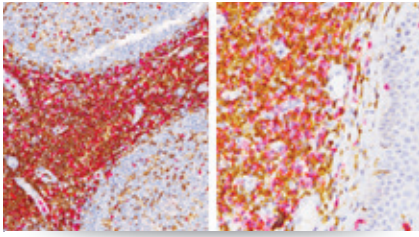
Lymphomas are the fifth highest diagnosed cancer in the United States, with about 4.8% of new cancer cases classified as either Hodgkin or non-Hodgkin lymphoma, contributing approx. 3.6% of cancer deaths yearly. As of 2013, there were approximately 763,000 people living with lymphoma in the United States. Those diagnosed with lymphoma have a 5 year survival rate of 70.7% (non-Hodgkin) or 86.2% (Hodgkin). Over the last 10 years, the new cancer case rate has remained stable and the death rate has decreased 2.5% each year. Biocare Medical is proud to offer key lymphoma antibodies that may aid in the identification of their respective proteins by IHC in FFPE tissues.

SEER Cancer Statistics Factsheets: Non-Hodgkin Lymphoma. National Cancer Institute. Bethesda, MD, <http://seer.cancer.gov/statfacts/html/nhl.html>  
SEER Cancer Statistics Factsheets: Hodgkin Lymphoma. National Cancer Institute. Bethesda, MD, <http://seer.cancer.gov/statfacts/html/hodg.html>

**Key Antibodies for Lymphoma Cancer**

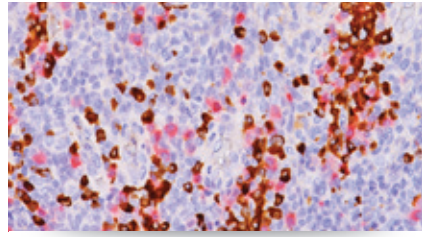
Product Name	Source	Clone	Catalog Number
CD4 + CD8	 	4B12 + SP16	API 3157DS
Kappa (M) + Lambda (P)	 	L1C1 + N/A	API 3159DS
CD3 [LN10]		LN10	ACI 3152; API 3152
CD4 [4B12]		4B12	ACI 3148; API 3148
CD5 (M)		4C7	CM 099; PM 099; OAI 099
CD10		56C6	CM 129; PM 129; IP 129; OAI 129
CD30 (Ki-1)		CON6D/B5	CM 346; PM 346
CD8 [C8/144B]		C8/144B	ACI 3160; API 3160
SOX11 (M)		SOX11-C1	ACI 3120; API 3120

# Key Antibodies for Lymphoma



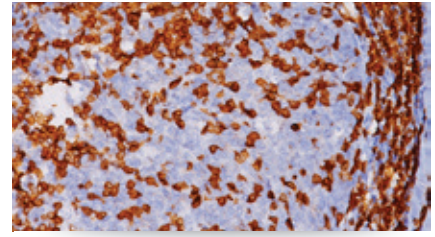
## CD4 + CD8

CD4 is expressed in the majority of T-cell lymphomas. CD8 is found in cortical thymocytes, T-cells and NK cells. The CD4:CD8 ratio may be helpful in distinguishing mycosis fungoides from its inflammatory mimics. This Multiplex IHC allows ratios and/or cell counts to be done on a single slide.



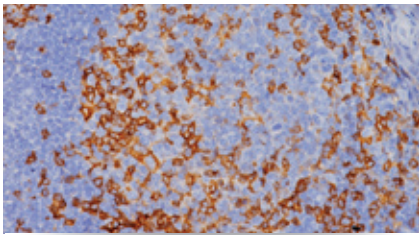
## Kappa (M) + Lambda (P)

Kappa + Lambda light chain counts and ratio may be useful in the identification of certain non-Hodgkin's lymphomas as these malignancies often express a single light chain class. A single slide with the double stain may provide a more accurate and easier assessment of the Kappa:Lambda ratio.



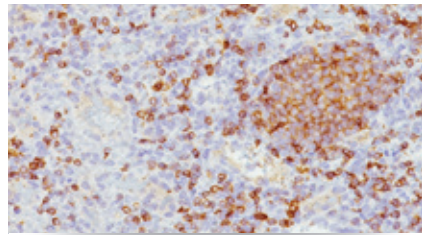
## CD3 [LN10]

CD3 is a highly specific and sensitive T-cell lineage marker, except for some aggressive large T-cell lymphomas and CD30 (Ki-1) positive anaplastic large cell lymphomas. CD3 [LN10] has demonstrated optimal staining when compared to other clones including PS1, F7.2.38 and SP7.



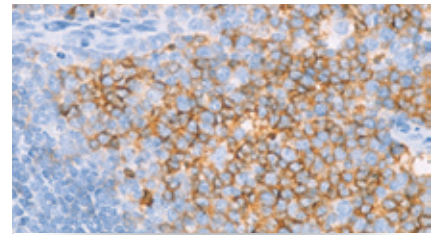
## CD4 [4B12]

CD4 is expressed in the majority of T-cell lymphomas, including mycosis fungoides. CD4 has been used in lymphoma panels that include CD3, CD5, CD8, CD7 and TIA-1. Tumor infiltrating CD4 T cells may also be a prognostic factor for the strategy of early antitumor immunity.



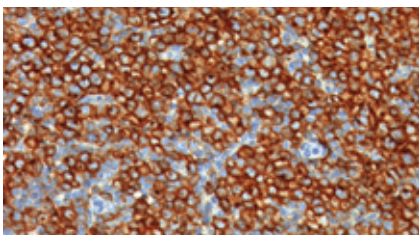
## CD5 (M)

CD5 is a T-cell associated marker that is also expressed by mantle cell lymphoma. CD5 has been observed in a subset of intravascular large B-cell lymphomas and anaplastic large cell lymphomas. CD5 is useful for mantle cell lymphoma when used in tandem with CD23, cyclin D1, and CD10.



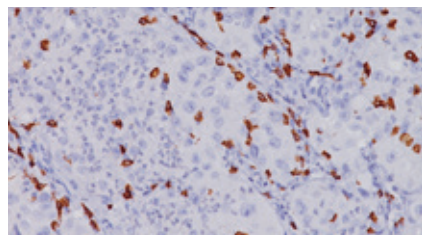
## CD10

CD10, also known as common acute lymphoblastic leukemia (CALLA), has been shown to react with TdT+ lymphoblastic leukemia, follicular germinal cell lymphoma, Burkitt's lymphoma and chronic myelocytic leukemia. CD10 also marks normal early lymphoid progenitor cells and immature B-cells.



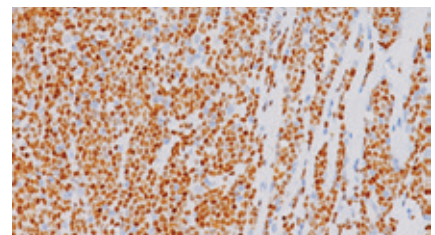
## CD30 (Ki-1)

CD30 (Ki-1) is expressed in mononuclear and Reed-Sternberg cells in Hodgkin's disease and in a majority of anaplastic large cell lymphomas. It may distinguish large cell lymphomas from histiocytic malignancies. CD30 with CD15 may differentiate between anaplastic large cell lymphoma and Hodgkin's disease.



## CD8 [C8/144B]

CD8 stains cells with cytotoxic activity, including cortical thymocytes, cytotoxic/suppressor T-cells and a subset of natural killer cells. CD8 has been used in panels with CD103, FOXP3, and PD-1 for the identification of CD8+ tumor infiltrating lymphocytes and their potential value for immune therapy.



## SOX11 (M)

SOX11 antibody (SRY (Sex Determining Region Y)-Box 11) is expressed in most mantle cell lymphomas (MCL) and, in particular, in all cyclin D1 negative MCLs reported so far. The novel SOX11-C1 offers high sensitivity and improved specificity compared to previous SOX11 IHC antibodies.

**BIOCARE**  
M E D I C A L

800.799.9499  
60 Berry Drive  
Pacheco, CA 94553

[www.biocare.net/lymphoma](http://www.biocare.net/lymphoma)