

RB1 (13q14.2) Green

FISH Probe
903-7315-102517

BIOCARE
M E D I C A L

Catalog Number: HFA7315A

Description: RB1 (13q14.2) Green FISH Probe
Volume: 100 µL

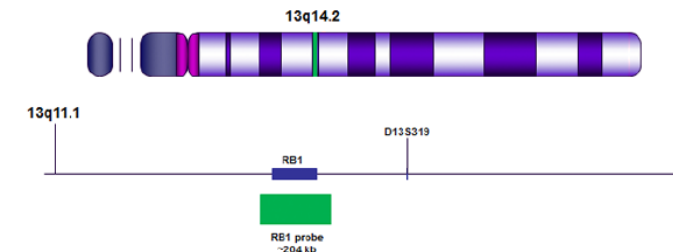
Intended Use:

Analyte Specific Reagent. Analytical and performance characteristics are not established.

Reagents Provided:

The RB1(13q14.2) Green FISH Probe is a fluorescently labeled probe designed to hybridize to ~204 kb of the 13q14.2 region of chromosome 13.

RB1 (13q14.2) Green probe (15 ng/µl) is provided in FISH Hybridization Buffer (FRR7311A) containing dextran sulfate and formamide.



* Not to scale

Storage and Stability:

Store probe at -20°C and away from light. The product is stable to the expiration date printed on the label, when stored under these conditions. Do not use after expiration date.

Technical Note:

Biocare Medical FISH probes are optimized to provide the best signal performance using optical filters that can accommodate the excitation/emission wavelengths specified below. Using filters outside these spectral specifications may produce sub-optimal results.

Fluorophore	Excitation (nm)	Emission (nm)
AQUA	434	481
GREEN	498	522
ORANGE	537	556
RED	593	618

Precautions:

1. This product is an Analyte Specific Reagent (ASR). Analytical and performance characteristics are not established.
2. The RB1 (13q14.2) Green FISH probe may cross-hybridize to other areas on the human genome. It is the responsibility of the user to validate any test for its specific use.
3. This product contains formamide, which may be toxic. Formamide may cause serious eye damage or reproductive toxicity. It may also cause irritation by inhalation or skin contact. Avoid any direct

 Biocare Medical

60 Berry Drive
Pacheco, CA 94553
USA

Rev. 062117

Tel: 800-799-9499 | www.biocare.net | Fax: 925-603-8080

- contact exposure to reagent. Take appropriate protective measures (use disposable gloves, protective glasses, and lab garments).
4. Specimens, before and after fixation, and all materials exposed to them should be handled as if capable of transmitting infection and disposed of with proper precautions. Never pipette reagents by mouth and avoid contacting the skin and mucous membranes with reagents and specimens. If reagents or specimens come in contact with sensitive areas, wash with copious amounts of water¹.
5. The SDS is available upon request and is located at <http://biocare.net/>.

References:

1. Clinical and Laboratory Standards Institute (CLSI). Protection of Laboratory workers from occupationally Acquired Infections; Approved Guideline-Fourth Edition CLSI document M29-A4 Wayne, PA 2014.