

1q21.3 Orange + Copy Control 1p12 Green

FISH Probe
902-7045-050318

BIOCARE
M E D I C A L

Catalog Number: PFR7045A
Description: 1q21.3 Orange + Copy Control 1p12 Green FISH Probe
Dilution: Ready-to-use
Volume: 100 µL

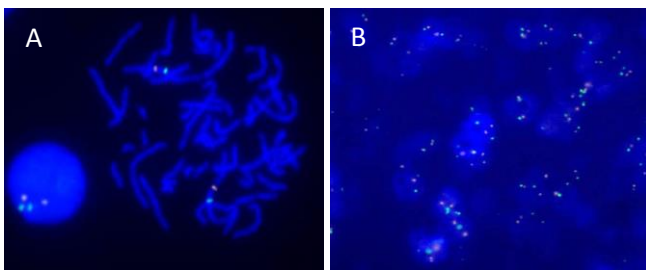
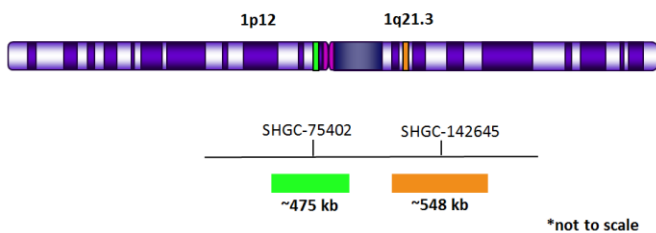
Intended Use:
For Research Use Only. Not for use in diagnostic procedures.

Summary and Explanation:

Amplification of the 1q21 locus has been demonstrated in hepatocellular carcinoma and represents one of the most frequently detected genomic alterations in that disease¹. Further, the 1q21.3 region has also been reported to harbor a gene that has been shown to demonstrate a high level of expression in prostate cancer².

Principle of Procedure

The 1q21.3 Orange Probe is designed to provide coverage of the 1q21.3 (~548 kb) region of chromosome 1. The Copy Control 1p12 Green Probe is designed to provide coverage of the 1p12 (~475 kb) region of chromosome 1. A normal cell would show two orange and two green signals.



A) 1q21.3 Orange + Copy Control 1p12 Green FISH probe hybridized on normal blood sample. Interphase and metaphase cellular states are shown. (B) 1q21.3 Orange + Copy Control 1p12 Green FISH probe hybridized on FFPE tissue

Species Reactivity: Human

Known Application:

Fluorescence In-situ Hybridization (FISH) on formalin-fixed paraffin embedded (FFPE) tissues.

Supplied As: Probe in hybridization buffer.

Storage and Stability:

Store probe at -20°C and away from light. The product is stable to the expiration date printed on the label, when stored under these conditions. Do not use after expiration date.

Technical Note:

Biocare Medical FISH probes are optimized to provide the best signal performance using optical filters that can accommodate the excitation/emission wavelengths specified below. Using filters outside these spectral specifications may produce sub-optimal results.

Fluorophore	Excitation (nm)	Emission (nm)
AQUA	432	472
GREEN	498	521
ORANGE	546	575
RED	593	618

Precautions:

1. This product is Research Use Only.
2. It is the responsibility of the user to validate any test for its specific use.
3. This product contains formamide, which may be toxic. Formamide may cause serious eye damage or reproductive toxicity. It may also cause irritation by inhalation or skin contact. Avoid any direct contact exposure to reagent. Take appropriate protective measures (use disposable gloves, protective glasses, and lab garments).
4. Specimens, before and after fixation, and all materials exposed to them should be handled as if capable of transmitting infection and disposed of with proper precautions. Never pipette reagents by mouth and avoid contacting the skin and mucous membranes with reagents and specimens. If reagents or specimens come in contact with sensitive areas, wash with copious amounts of water³.
5. The SDS is available upon request and is located at <http://biocare.net/>.

Technical Support:

Contact Biocare's Technical Support at 1-800-542-2002 for questions regarding this product.

References:

1. Chromosome 1q21 amplification and oncogenes in hepatocellular carcinoma. Leilei Chen, Tim Hon Man Chan, and Xin-yuan Guan. *Acta Pharmacol Sin.* 2010 Sep; 31(9): 1165-1171.
2. A1bZIP, a Novel bZIP Gene Located on Chromosome 1q21.3 That Is Highly Expressed in Prostate Tumors and of Which the Expression Is Up-Regulated by Androgens in LNCaP Human Prostate Cancer Cells. Heng Qi, Catherine Fillion, Yvan Labrie, José e Grenier, André a Fournier, Louise Berger, Mohamed El-Alfy, and Claude Labrie. *Cancer Research* 62, 721-733, February 1, 2002."
3. Clinical and Laboratory Standards Institute (CLSI). Protection of Laboratory workers from occupationally Acquired Infections; Approved Guideline-Fourth Edition CLSI document M29-A4 Wayne, PA 2014.

 Biocare Medical

60 Berry Drive
Pacheco, CA 94553
USA

Rev. 062117

Tel: 800-799-9499 | www.biocare.net | Fax: 925-603-8080