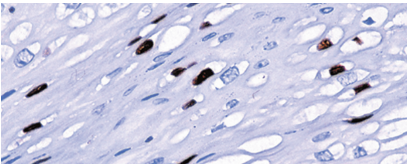




BIOCARE
M E D I C A L

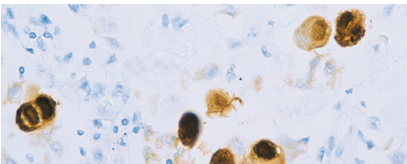
Key Antibodies For Infectious Diseases

Top Rated Infectious Diseases Antibodies



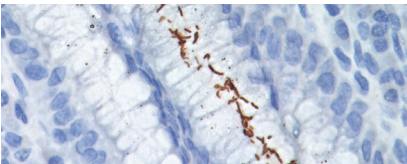
HPV Cocktail Broad Spectrum

This antibody detects HPV-1, 6, 11, 16, 18, and 31 in formalin-fixed paraffin embedded biopsy specimens.



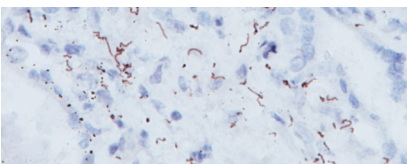
Cytomegalovirus (CMV)

Cytomegalovirus (CMV) can exacerbate gastrointestinal mucosal injury and affect fetuses.



Helicobacter pylori










Helicobacter pylori are spiral-curved, gram-negative bacteria that is present on surface epithelium of the mucous layer of the stomach.



Treponema Pallidum

Spirochete (*Treponema pallidum*) is the causative agent of syphilis. This antibody consists of a rabbit purified IgG fraction that is highly specific.

Key Antibodies for Infectious Diseases

Product Name	Source	Clone	Catalog Number
Cytomegalovirus (CMV)	 ²	DT10 + BC90	ACA; APA; AVA 118
<i>Helicobacter pylori</i>		BC7	CM; PM; IP 383
HPV Cocktail Broad Spectrum	 ²	BPV-1/1H8 + CAMVIR-1	CM; PM 177
<i>Mycobacterium tuberculosis</i> (TB)		Polyclonal	CP; PP 140
<i>Treponema pallidum</i> (Spirochete)		Polyclonal	ACA; APA; IPA; AVA 135
Epstein-Barr Virus (EBV)		EBV01, 02 and 03	APA 111
HPV-16		CAMVIR-1	CM 186
TIM3 [BLR033F]		BLR033F	ACI; API 3258
HHV-8		13B10	ACA; APA; OPAA; AVA; ALA 3290
<i>Helicobacter pylori</i> [EPR10353]		EPR10353	ACA,APA, OPAA, ALA, AVA 3291