

# *intelliPATH* MAX

Fully Open Automated Double-wide Slide Stainer



*Double Your Results.*

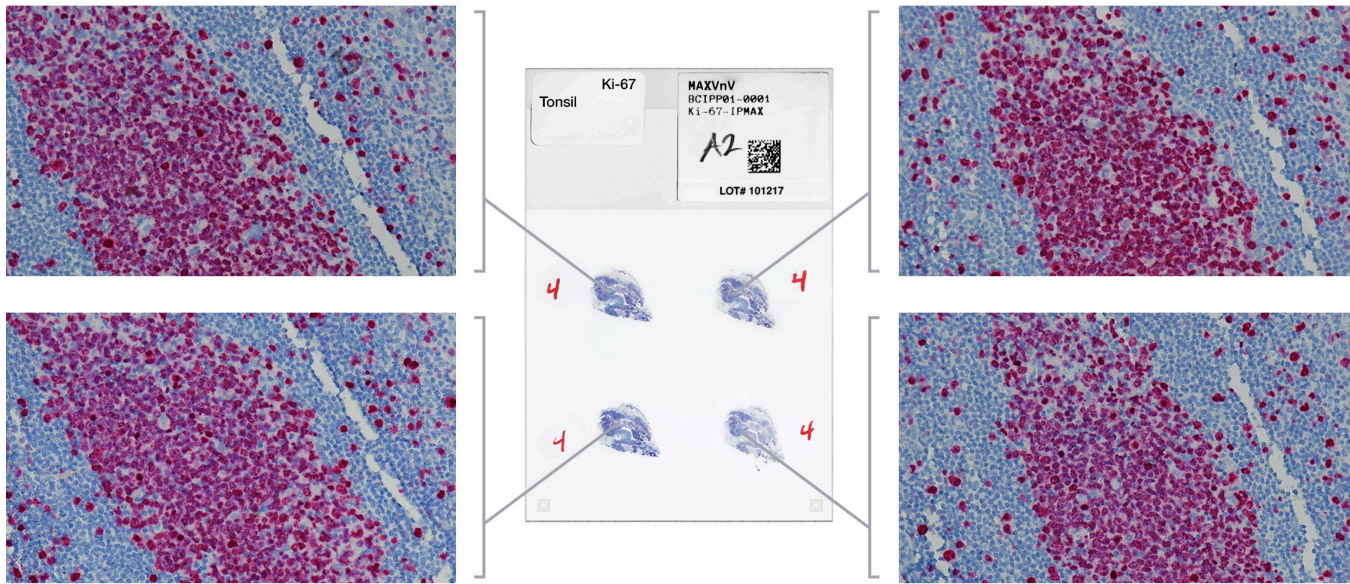


**BIOCARE**  
M E D I C A L

# intelliPATH MAX

The intelliPATH MAX Automated Slide Stainer is the latest addition to Biocare Medical's expanding instrument portfolio. The system is designed for processing patient slides in anatomical pathology and histology laboratories. The intelliPATH MAX is intended for processing double-wide slides for larger tissues while delivering reliable and consistent IHC staining in such a manner that closely mimics manual staining methods. This enables easy transfer of established manual staining methods to an automated platform with minimal protocol optimization.

The intelliPATH MAX is a fully open system with continuous random access and prioritized STAT capability, providing maximum flexibility to meet the demands of your laboratory while increasing productivity and improving turnaround time. The system's software allows for rapid, straightforward set up of protocols and real-time updates during a run. The intelliPATH MAX can process double-wide slides at a maximum capacity of 25 slides (5 slides per slide tray) per run. The intelliPATH MAX is an open platform for clinical and research markets. Biocare antibodies and detection systems are available for added convenience and efficiency.



## System Specifications

\*Staining is consistent and reproducible across entire slide area

<b>Catalog Number</b>	IPMX0001US / INTL		
<b>Slide Capacity</b>	25 Double-wide Slides		
<b>Independent Slide Trays</b>	5 slide trays, 5 slide positions per tray		
<b>Slide Specifications</b>	Width: 49.5 – 51.0 mm, Length: 76.5 mm (maximum), Depth: 1.3 mm (maximum)		
<b>Reagent Vial Capacity</b>	48 (20 mL vials)	<b>Cold Spot Capacity</b>	2 (6 mL vials)
<b>Cold Spot Temperature Range</b>	2-8°C / 35-46°F	<b>Mixing Vial Capacity</b>	18 (6 mL vials)
<b>Reagent Dispensing Range</b>	Delivers 200 - 1200µL	<b>Multi-dispensing rRange</b>	20 mL
<b>Buffer Inlets</b>	3	<b>Electrical Requirements</b>	900W; 115V/230V; 50/60 Hz
<b>LIS</b>	Compatible with LIS2-A2 (ASTM) and HL7 messaging standards		
<b>Waste Separation</b>	Separated hazardous and non-hazardous		
<b>Instrument Dimensions (W x H x D)</b>	40" X 24" X 25" / 102 cm X 61 cm X 64 cm (excludes optional computer arm)		
<b>Computer Arm</b>	Optional, attaches to the left or right side of the instrument		
<b>Instrument Weight</b>	145 lbs / 66 kg (excl. optional computer arm)		



**BIOCARE**  
M E D I C A L

800.799.9499  
60 Berry Drive  
Pacheco, CA 94553

