

BIOCARE
M E D I C A L

intelliPATH MAX

Fully Open Automated Slide Staining Instrument



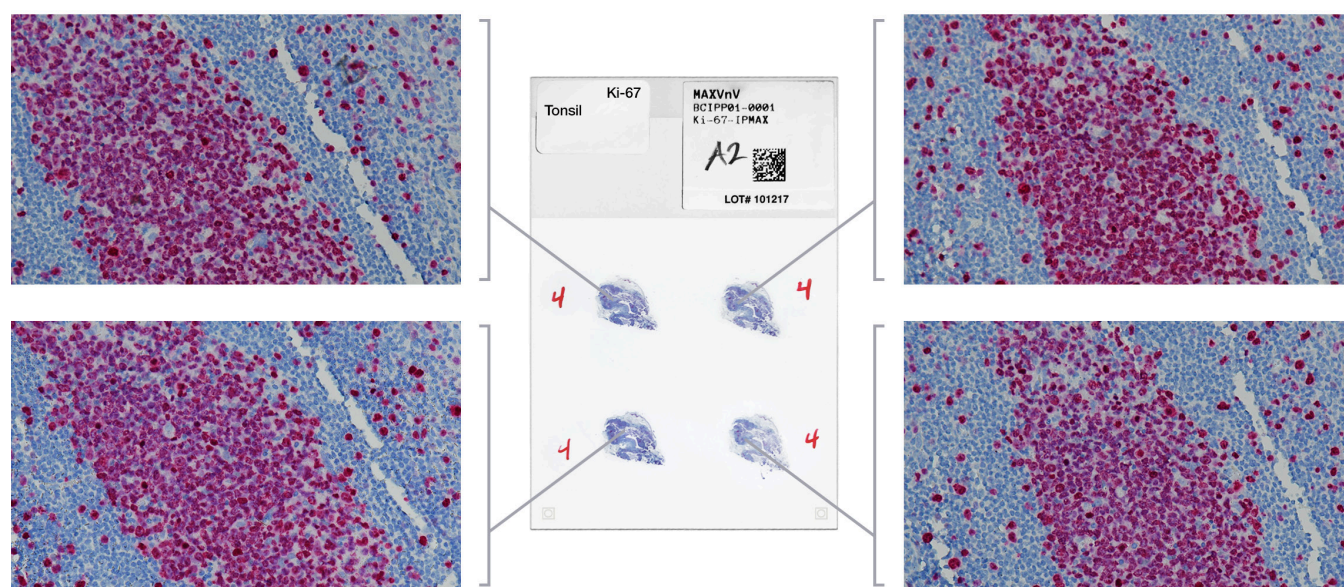
Double Your Results.

Automated Double-wide Slide Stainer

intelliPATH MAX

The intelliPATH MAX Automated Slide Stainer is the latest addition to Biocare Medical's expanding instrument portfolio. The system is designed for processing patient slides in anatomical pathology and histology laboratories. The intelliPATH MAX is intended for processing double-wide slides for larger tissues while delivering reliable and consistent IHC staining in such a manner that closely mimics manual staining methods. This enables easy transfer of established manual staining methods to an automated platform with minimal protocol optimization.

The intelliPATH MAX is a fully open system with continuous random access and prioritized STAT capability, providing maximum flexibility to meet the demands of your laboratory while increasing productivity and improving turnaround time. The system's software allows for rapid, straightforward set up of protocols and real-time updates during a run. The intelliPATH MAX can process double-wide slides at a maximum capacity of 25 slides (5 slides per slide tray) per run. The intelliPATH MAX is an open platform for clinical and research markets. Biocare antibodies and detection systems are available for added convenience and efficiency.



*Staining is consistent and reproducible across entire slide area

System Specifications

Catalog Number	IPMX0001US / INTL		
Slide Capacity	25 Double-wide Slides		
Independent Slide Trays	5 slide trays, 5 slide positions per tray		
Slide Specifications	Width: 49.5 – 51.0 mm, Length: 76.5 mm (maximum), Depth: 1.3 mm (maximum)		
Reagent Vial Capacity	48 (20 mL vials)	Cold Spot Capacity	2 (6 mL vials)
Cold Spot Temperature Range	2-8°C / 35-46°F	Mixing Vial Capacity	18 (6 mL vials)
Reagent Dispensing Range	Delivers 200 - 1200µL	Multi-dispensing rRange	20 mL
Buffer Inlets	3	Electrical Requirements	900W; 115V/230V; 50/60 Hz
LIS	Compatible with LIS2-A2 (ASTM) and HL7 messaging standards		
Waste Separation	Separated hazardous and non-hazardous		
Instrument Dimensions (W x H x D)	40" X 24" X 25" / 102 cm X 61 cm X 64 cm (excludes optional computer arm)		
Computer Arm	Optional, attaches to the left or right side of the instrument		
Instrument Weight	145 lbs / 66 kg (excl. optional computer arm)		