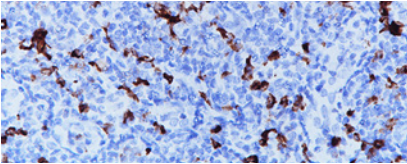


Key Markers For

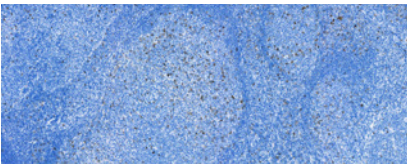
Immuno-Oncology

Top Rated Immuno-Oncology Markers



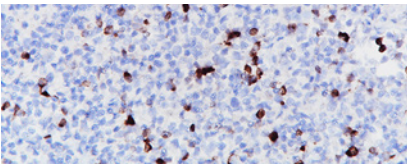
CTLA-4 [CAL49]

Cytotoxic T lymphocyte-associated antigen-4 (CTLA-4) is a member of the CD28 superfamily and is a negative regulator of T cell-mediated immune responses.



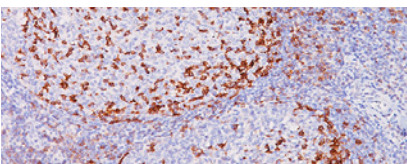
GITR [CAL8]

GITR is a co-stimulatory cell surface receptor expressed at high levels on T regulatory cells, intermediate levels on NK cells, and at low levels on naïve and memory T cells.



LAG3 [CAL26]





















LAG-3 (Lymphocyte Activation Gene 3) is a surface receptor expressed on activated T cells, an exhaustion marker with immunosuppressive activity.



PD-1 [CAL20]

Programmed death 1 (PD-1) is a cell surface co-receptor member of the CD28/CTLA-4 family, and functions as a downregulator of the immune system through a dual mechanism of inhibition.

Key Markers for Immuno-Oncology

Product Name	Source	Clone	Catalog Number
CD39 [EPR20627]		EPR20627	ACI; API; OPAI; ALI; AVI; 3283
CD1a [O10]		O10	ACI; API 3158
CD3 [LN10]		LN10	ACI; API 3152
CD4 [4B12]		4B12	ACI; API 3148
CD8		SP16	CRM; PRM 311
CD8 [C8/144B]		C8/144B	ACI; API 3160
CD20 [BC30]		BC30	ACI; API; OPAI; ALI; AVI; 3287
CD20 [L26]		L26	CM; IP; PM 004
CD68		KP1	CM; IP; PM 033
CD103 (RM)		EP206	ACI; API 3117
CD137		BBK-2	ACI; API 3201
CD163		10D6	CM; PM 353
CTLA-4 [CAL49]		CAL49	ACI; API 3220
FOXP3		236A/E7	API 3164
FOXP3 [86D]		86D	ACI; API 3197
GATA-3		L50-823	CM; PM 405
GITR [CAL8]		CAL8	ACI; API 3221
IDO1		UMAB126	ACI; API 3210
IFNG [IFNG/3996R]		IFNG/3996R	ACI; API 3266
LAG3 [CAL26]		CAL26	ACI; API 3213
PD-1		NAT105	ACI; API 3137
PD-1 (RM)		EP239	API 3162
PD-1 [CAL20]		CAL20	ACI; API 3224
PD-L1		CAL10	ACI; API 3171
OX40/CD134		EPR23001-88	ACI; API; AVI 3245
TIGIT [BC41]		BC41	ACI; API 3254