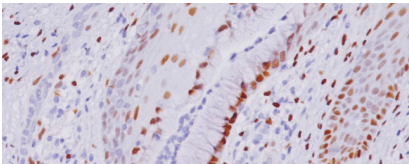




BIOCARE
M E D I C A L

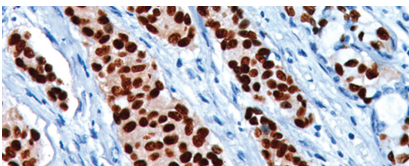
Key Antibodies For Gynecologic Pathology

Top Rated Gynecological Antibodies



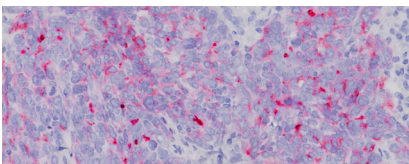
Estrogen Receptor (ER) [SP1]

Studies have shown ER is present in the nuclei of epithelial cells in normal breast and endometrial tissues, as well as a subset of breast carcinomas.



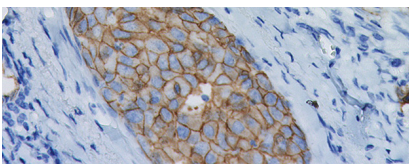
Progesterone Receptor (PR) [SP2]

The presence of progesterone receptor (PR) in breast tumors indicates an increased likelihood of response to anti-estrogen (tamoxifen) therapy.



CA 125





























Studies have shown that CA 125 reacts with approximately 80% of epithelial ovarian neoplasms of serous, endometrioid, clear cell and undifferentiated types.



c-erbB-2/HER2

c-erbB-2/HER2 antibody is directed against the cytoplasmic domain of the human c-erbB-2 protein and may provide increased sensitivity compared to the mouse monoclonal.

Key Antibodies for Gynecological Pathology

Product Name	Source	Clone	Catalog Number
MCM2 + TOP2A		OT18A11, UMAB146	AVI; API; OPAl 3181
Estrogen Receptor (RM)		SP1	ACA; APA 301
Progesterone Receptor (RM)		SP2	ACA; APA; IPA 302
Mammaglobin		1A5	OAI; PM 269
CA 125		OC125	CM; PM 101
CD247 [BL-336-1B2]		BL-336-1B2]	ACI; API 3268
c-erbB-2/HER2 (RM)		EP3	ACA; APA; AVA 342
E-Cadherin		HECD-1	CM; PM; IP 170
GATA-3		L50-823	CM; PM 405
Smooth Muscle Myosin Heavy Chain		SMMS-1	CM; PM 420
CK5/14 + p63 + CK7/18	 	4A4, BC1, EP30, LL002, XM26	OAI; PM; VP 360
p120 + E-cadherin	 	98/pp120, EP6	API 3011
HPV-16		CAMVIR-1	CM 186
HPV Cocktail Broad Spectrum		BPV-1/1H8 + CAMVIR-1	CM; PM 177
Carcinoembryonic Antigen (CEA)		COL-1	CM; PM 058
Cytokeratin 7 (RM)		BC1	CRM; PRM; IP 339
PAX8		BC12	ACI; API; AVI 438
CDH17		1H3	ACI; API; AVI 3111
CDX2+CK7	 	CDX2-88 + BC1	PM 367
p16 INK4a		BC42	ACI; API 3231
TIM3 [BLR033F]		BLR033F	ACI; API 3258
H3K27me3 [C36B11]		C36B11	ACI; API 3249
Estrogen Receptor (ER) [SP1]		SP1	ACA; APA; OPAA 301
OCT 3/4 [N1NK]		N1NK	ACI, ALI, API, AVI, OPAl 3278
p27 KIP1 [Y236]		Y236	ACI; API; OPAl; ALI; AVI; 3282