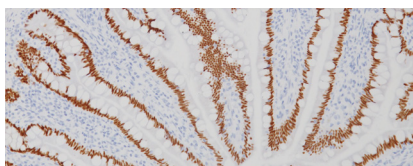




**BIOCARE**  
M E D I C A L

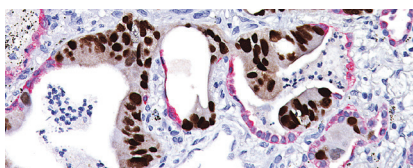
# Key Antibodies For Gastrointestinal Pathology

## Top Rated Gastrointestinal Antibodies



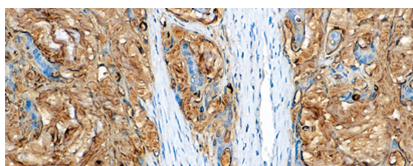
### CDX2

CDX2 has been useful to establish gastrointestinal origin of metastatic adenocarcinomas and carcinoids. It may help to distinguish metastatic colorectal adenocarcinoma from tumors of unknown origin.



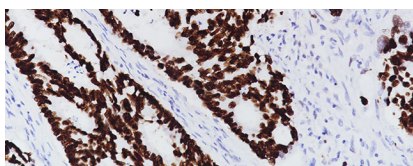
### CDX2 + CK7

CDX2 is a sensitive marker for colonic carcinoma metastatic to the ovary while Cytokeratin 7 shows expression in primary ovarian tumors and metastases of upper gastrointestinal tract origin.



### CA 19-9















The CA 19-9 antibody has been shown to label adenocarcinomas of the pancreas, stomach, breast, colon and gall bladder.














### SATB2

SATB2 may be useful in distinguishing adenocarcinomas of colorectal origin from those of gastric and pancreatic origin.



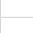







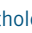
## Key Antibodies for Colon Pathology

Product Name	Source	Clone	Catalog Number
CDH17		1H3	ACI; API; AVI 3111
CDX2 (RM)		EP25	ACI; API 3144
CDX2 (M) + CDH17 (RM)		CDX2-88 + EP86	API 3135DS
Cytokeratin 20 (CK20)		Ks20.8	CM; PM; IP; OPAI 062
MLH-1		G168-15	CM; PM; IPI; AVI; OPAI; ALI 220
MSH2		FE11	CM; PM; AVI; OPAI; ALI 219
MSH6		44	CM; PM; IPI; AVI; OPAI; ALI 265
PMS2		A16-4	CM; PM; IPI; AVI; OPAI; ALI 344
ERCC1		4F9	ACI 3147
CDX2		CDX2-88	CM; IP; PM; VP; OPAI; ALI 226
SATB2 (RM)		EP281	ACI; API; ALI; AVI 3229
CDX2 + CK7		CDX2-88 + BC1	PM 367
MLH-1 [BC23]		BC23	ACI; API; AVI 3214
MSH6 [BC19]		BC19	ACI; API; AVI 3215



## Key Antibodies for Gall Bladder & Pancreas Pathology

Product Name	Source	Clone	Catalog Number
$\beta$ -Catenin		14	CM; PM 406
CD10		56C6	CM; PM; IP; OPAI; ALI; AVI 129
Chromogranin A		LK2H10 + PHE5	CM; PM; IP; OPAI; ALI; AVI 010
Cytokeratin 7 (CK7)		OV-TL 12/30	CM; PM; IPI; OPAI; ALI 061
Cytokeratin 19 (CK19)		Ks19.1	CM; PM 242
E-cadherin (RM)		EP6	ACI; API 3012
Glypican-3		1G12	CM; PM 396
Mucin 5AC (Gastric Mucin)		45M1	CM 231
S100P		Polyclonal	ACI; API 3010
CA 19-9		BC/121SLE	CM; PM; AVI 123
H3K27me3 [C36B11]		C36B11	ACI; API; OPAI; ALI; AVI 3249

## Key Antibodies for Liver Pathology

Product Name	Source	Clone	Catalog Number
Arginase-1 (RM)		EP261	ACI; API; AVI 3058
Glypican-3		1G12	CM; PM 396
Hepatocyte Specific Antigen (HSA)		OCH1E5	CM; PM 166
Cytokeratin 19 (CK19)		Ks19.1	CM; PM 242
MOC-31		MOC-31	CM; PM; OPAI; ALI; AVI 403
Alpha-1-Fetoprotein (AFP)		Polyclonal	CP; PP 028
Carcinoembryonic Antigen (CEA)		COL-1	CM; PM 058
Cytokeratin LMW (8/18)		5D3	CM; PM; IPI; OPAI; ALI; AVI 056
Cytokeratin HMW [34 $\beta$ E12]		34 $\beta$ E12	CM; PM; IPI; OPAI; ALI; AVI 127
Glutamine Synthetase		6/Glutamine Synthetase	ACI; API 3009
H3K27me3 [C36B11]		C36B11	ACI; API; OPAI; ALI; AVI 3249

## Key Antibodies for Gastric Pathology

Product Name	Source	Clone	Catalog Number
<i>Helicobacter pylori</i>		BC7	CM, PM, IP, OPAI, ALA 383
<i>Helicobacter pylori</i> [EPR10353]		EPR10353	ACA, APA, OPAA, ALA, AVA 3291

**BIOCARE**  
M E D I C A L

800.799.9499  
60 Berry Drive  
Pacheco, CA 94553

[www.biocare.net](http://www.biocare.net)

GASTRO-103M  
052024