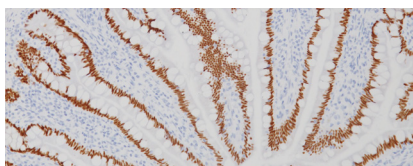




BIOCARE
M E D I C A L

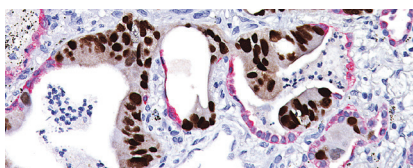
Key Antibodies For Gastrointestinal Pathology

Top Rated Gastrointestinal Antibodies



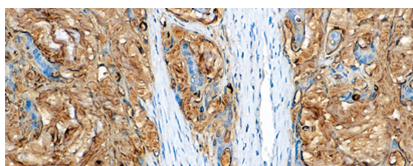
CDX2

CDX2 has been useful to establish gastrointestinal origin of metastatic adenocarcinomas and carcinoids. It may help to distinguish metastatic colorectal adenocarcinoma from tumors of unknown origin.



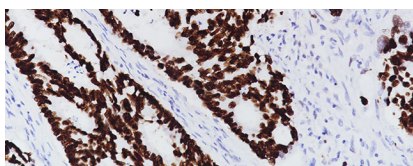
CDX2 + CK7

CDX2 is a sensitive marker for colonic carcinoma metastatic to the ovary while Cytokeratin 7 shows expression in primary ovarian tumors and metastases of upper gastrointestinal tract origin.



CA 19-9

















The CA 19-9 antibody has been shown to label adenocarcinomas of the pancreas, stomach, breast, colon and gall bladder.















SATB2

SATB2 may be useful in distinguishing adenocarcinomas of colorectal origin from those of gastric and pancreatic origin.












Key Antibodies for Colon Pathology

Product Name	Source	Clone	Catalog Number
CDH17		1H3	ACI; API; AVI 3111
CDX2 (RM)		EP25	ACI; API 3144
CDX2 (M) + CDH17 (RM)	 	CDX2-88 + EP86	API 3135DS
CDX2		CDX2-88	CM; IP; PM; VP; OPAI; ALI 226
CDX2 + CK7	 	CDX2-88 + BC1	PM 367
Cytokeratin 20 (CK20)		Ks20.8	CM; PM; IP; OPAI 062
ERCC1		4F9	ACI 3147
MLH-1		G168-15	CM; PM; IPI; AVI; OPAI; ALI 220
MLH-1 [BC23]		BC23	ACI; API; AVI 3214
MSH2		FE11	CM; PM; AVI; OPAI; ALI 219
MSH6		44	CM; PM; IPI; AVI; OPAI; ALI 265
MSH6 [BC19]		BC19	ACI; API; AVI 3215
PMS2		A16-4	CM; PM; IPI; AVI; OPAI; ALI 344
SATB2 (RM)		EP281	ACI; API; ALI; AVI 3229

Key Antibodies for Gall Bladder & Pancreas Pathology

Product Name	Source	Clone	Catalog Number
β -Catenin		14	CM; PM 406
CA 19-9		BC/121SLE	CM; PM; AVI 123
CD10		56C6	CM; PM; IP; OPAI; ALI; AVI 129
Chromogranin A	 ²	LK2H10 + PHE5	CM; PM; IP; OPAI; ALI; AVI 010
Cytokeratin 7 (CK7)		OV-TL 12/30	CM; PM; IPI; OPAI; ALI 061
Cytokeratin 19 (CK19)		Ks19.1	CM; PM 242
E-cadherin (RM)		EP6	ACI; API 3012
Glypican-3		1G12	CM; PM 396
H3K27me3 [C36B11]		C36B11	ACI; API; OPAI; ALI; AVI 3249
Mucin 5AC (Gastric Mucin)		45M1	CM 231
S100P	 	Polyclonal	ACI; API 3010

Key Antibodies for Liver Pathology

Product Name	Source	Clone	Catalog Number
Alpha-1-Fetoprotein (AFP)		Polyclonal	CP; PP 028
Arginase-1 (RM)		EP261	ACI; API; AVI 3058
Carcinoembryonic Antigen (CEA)		COL-1	CM; PM 058
Cytokeratin LMW (8/18)		5D3	CM; PM; IPI; OPAI; ALI; AVI 056
Cytokeratin HMW [34 β E12]		34 β E12	CM; PM; IPI; OPAI; ALI; AVI 127
Cytokeratin LMW (8/18)		5D3	CM; PM; IPI; OPAI; ALI; AVI 056
Glutamine Synthetase		6/Glutamine Synthetase	ACI; API 3009
Glypican-3		1G12	CM; PM 396
H3K27me3 [C36B11]		C36B11	ACI; API; OPAI; ALI; AVI 3249
Hepatocyte Specific Antigen (HSA)		OCH1E5	CM; PM 166
MOC-31		MOC-31	CM; PM; OPAI; ALI; AVI 403

BIOCARE
M E D I C A L

800.799.9499
60 Berry Drive
Pacheco, CA 94553

www.biocare.net

GASTRO-102M
090324