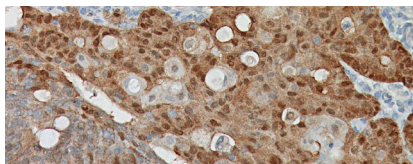




BIOCARE
M E D I C A L

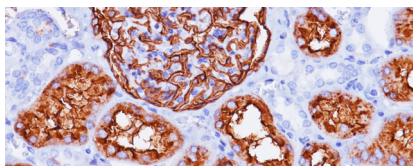
Key Antibodies For Gall Bladder & Pancreas Pathology

Top Rated Gall Bladder & Pancreas Antibodies



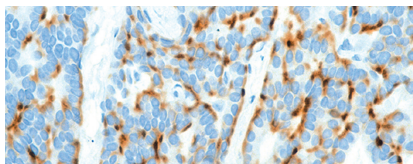
β -Catenin

β -Catenin stains the nucleus of more than 90% of solid pseudopapillary tumors and a large percentage of acinar cell carcinomas and pancreatoblastomas.



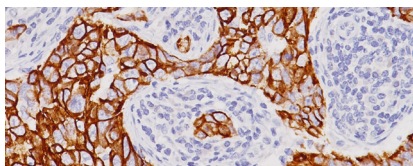
CD10

CD10 is positive in pancreatic neuroendocrine tumors and almost all solid pseudopapillary tumors.



Chromogranin A














Chromogranin A is present in neuroendocrine cells throughout the body. Almost 100% of pancreatic neuroendocrine tumors are positive for Chromogranin.



Cytokeratin 7 (CK7)

In acinar cell carcinoma of the pancreas, Cytokeratin 7 (CK7) is frequently negative or only focally positive.

Key Antibodies for Gall Bladder & Pancreas Pathology

| Product Name | Source | Clone | Catalog Number |
|---------------------------|--|---------------|--------------------------------|
| Mast Cell Tryptase [AA1] |  | AA1 | ACI; API; OPAl; ALI; AVI; 3277 |
| CD39 [EPR20627] |  | EPR20627 | ACI; API; OPAl; ALI; AVI; 3283 |
| β-Catenin |  | 14 | CM; PM 406 |
| CD10 |  | 56C6 | CM; PM; IP 129 |
| Chromogranin A |  ² | LK2H10 + PHE5 | CM; PM; IP 010 |
| Cytokeratin 7 (CK7) |  | OV-TL 12/30 | CM; PM; IPI 061 |
| Cytokeratin 19 (CK19) |  | Ks19.1 | CM; PM; OAI 242 |
| E-cadherin (RM) |  | EP6 | ACI; API 3012 |
| Glypican-3 |  | 1G12 | CM; PM 396 |
| Mucin 5AC (Gastric Mucin) |  | 45M1 | CM 231 |
| S100P |  | Polyclonal | ACI; API 3010 |
| CA 19-9 |  | BC/121SLE | CM; PM 123 |
| H3K27me3 [C36B11] |  | C36B11 | ACI; API 3249 |