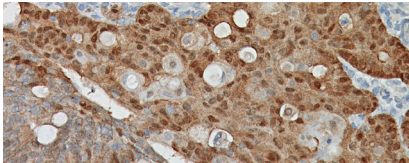




BIOCARE
M E D I C A L

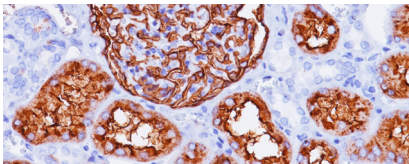
Key Antibodies For Gall Bladder & Pancreas Pathology

Top Rated Gall Bladder & Pancreas Antibodies



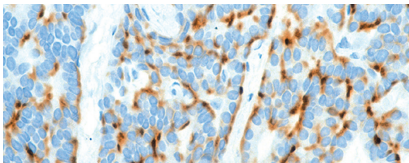
β -Catenin

β -Catenin stains the nucleus of more than 90% of solid pseudopapillary tumors and a large percentage of acinar cell carcinomas and pancreatoblastomas.



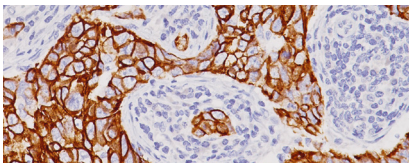
CD10

CD10 is positive in pancreatic neuroendocrine tumors and almost all solid pseudopapillary tumors.



Chromogranin A











Chromogranin A is present in neuroendocrine cells throughout the body. Almost 100% of pancreatic neuroendocrine tumors are positive for Chromogranin.



Cytokeratin 7 (CK7)

In acinar cell carcinoma of the pancreas, Cytokeratin 7 (CK7) is frequently negative or only focally positive.

Key Antibodies for Gall Bladder & Pancreas Pathology

Product Name	Source	Clone	Catalog Number
β-Catenin		14	CM; PM; VLTM 406
CD10		56C6	CM; PM; IP; OAI; VLTM 129
Chromogranin A	 ²	LK2H10 + PHE5	CM; PM; IP; OAI; VLTM 010
Cytokeratin 7 (CK7)		OV-TL 12/30	CM; PM; IPI; OAI; VLTM 061
Cytokeratin 19 (CK19)		Ks19.1	CM; PM; OAI 242
E-cadherin (RM)		EP6	ACI; API; VLTR 3012
Glypican-3		1G12	CM; PM 396
Mucin 5AC (Gastric Mucin)		45M1	CM 231
S100P		Polyclonal	ACI; API; VLTR 3010
CA 19-9		BC/121SLE	CM; PM 123