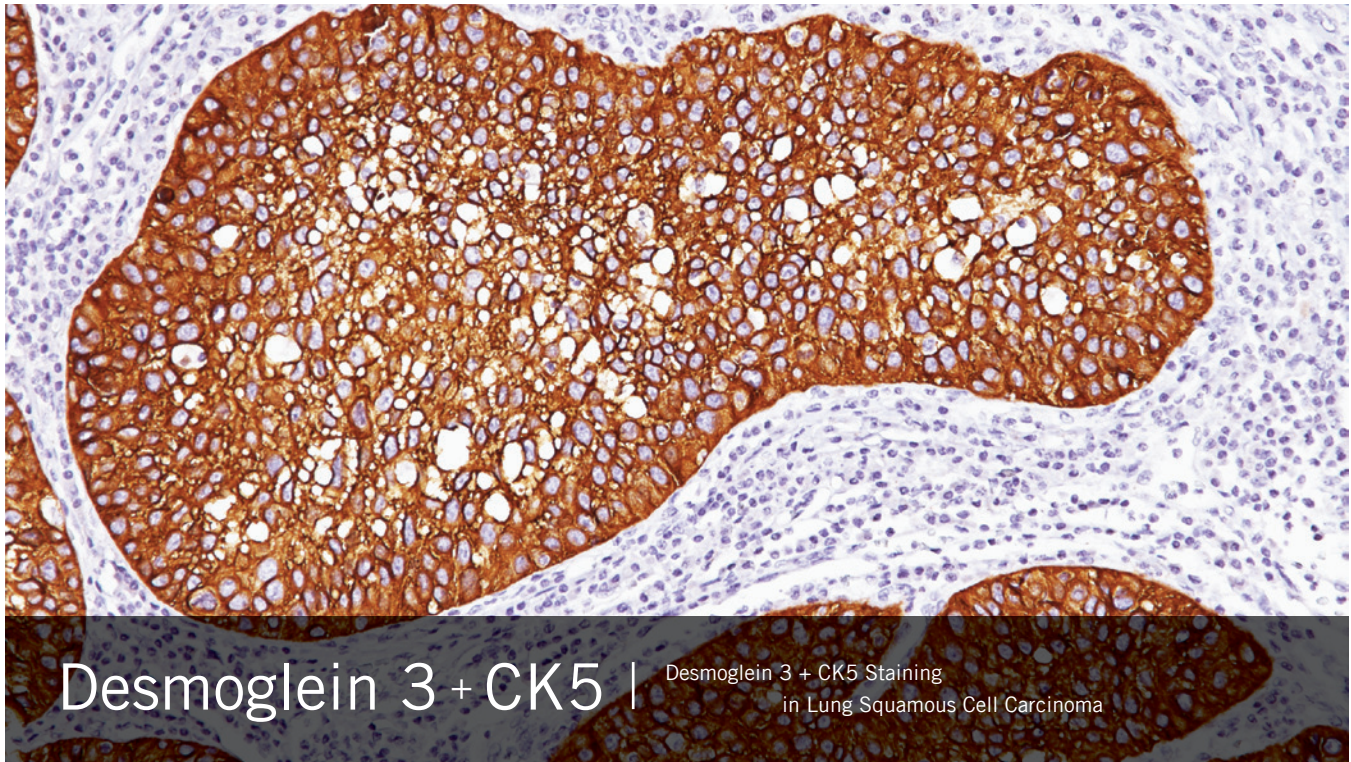


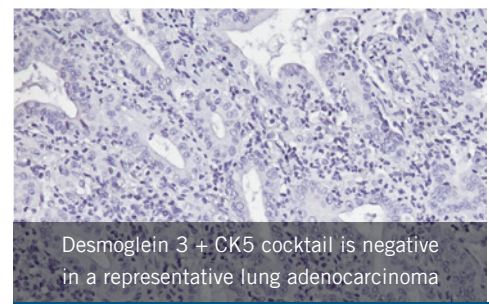
Desmoglein 3 + CK5 antibody cocktail vs. p63

Ancillary tool for differentiating lung adenocarcinoma & lung squamous cell carcinoma
A distinction with important therapeutic implications



About DSG3 + CK5

Non-small cell lung cancer (NSCLC) can be classified into several histological subtypes, most commonly adenocarcinoma (LADC) or squamous cell carcinoma (SqCC). With the introduction of targeted therapies that can result in dramatically different outcomes based on subtype, conserving tissue for predictive marker testing is now an essential consideration. In one study, p63 was found to be sensitive for SqCC (88.4%); however, 11.3% of LADC cases were also positive for p63 (88.7% specific).¹ In contrast, on the same cases, a cocktail of Desmoglein 3 + CK5 was found to be 92.6% sensitive for SqCC, with no positive staining in cases of LADC (100% specific).¹ Hence, a cocktail of Desmoglein 3 + CK5 is potentially useful in the classification of SqCC and LADC.



1. D Tacha, C Yu, R. Bremer, W Qi, T. Haas, A Six Antibody Panel for the Classification of Lung Adenocarcinoma versus Squamous Cell Carcinoma. Appl Immunohistochem Mol Morphol. 2012 May;20(3):201-7.

Ordering Information	Concentrate	Predilute
Desmoglein 3 + CK5	ACI 3018 A, C	API 3018 AA