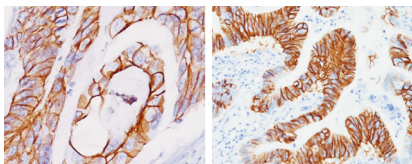




**BIOCARE**  
M E D I C A L

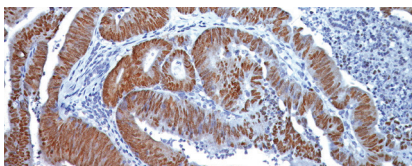
# Key Antibodies For Colon Pathology

## Top Rated Colon Antibodies



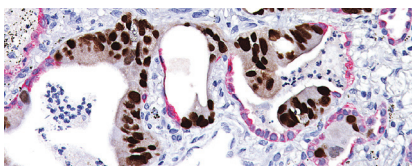
### CDH17

CDH17 is a highly specific marker in colon cancer and is a more sensitive marker than CDX2 and CK20.



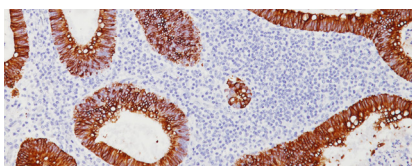
### CDX2

CDX2 is a sensitive marker for colonic carcinoma metastatic to the ovary and is more specific than CK20 as it is not expressed by serous and endometrioid carcinomas.



### CDX2 + CK7
















This multiplex cocktail of CDX2 and CK7 can be used to distinguish colon cancers from breast, lung and ovarian cancers.



### Cytokeratin 20 (CK20)

Cytokeratin 20 is expressed in adenocarcinomas of the colon, stomach, pancreas, bile system, transitional cell carcinomas of the urinary tract, and Merkel cell carcinomas.

# Key Antibodies for Colon Pathology

Product Name	Source	Clone	Catalog Number
CD54 [E3Q9N]		E3Q9N	ACI; API; AVI; ALI; OPAI 3296
CDH17		1H3	ACI; API; AVI 3111
CDX2 (RM)		EP25	ACI; API 3144
CDX2 (M) + CDH17 (RM)		CDX2-88 + EP86	API 3135DS
Cytokeratin 20 (CK20)		Ks20.8	CM; PM; IP; OPAI 062
MLH-1		G168-15	CM; PM; IPI; AVI; OPAI; ALI 220
MSH2		FE11	CM; PM; AVI; OPAI; ALI 219
MSH6		44	CM; PM; IPI; AVI; OPAI; ALI 265
PMS2		A16-4	CM; PM; IPI; AVI; OPAI; ALI 344
ERCC1		4F9	ACI 3147
CDX2		CDX2-88	CM; IP; PM; VP; OPAI; ALI 226
SATB2 (RM)		EP281	ACI; API; ALI; AVI 3229
CDX2 + CK7		CDX2-88 + BC1	PM 367
MLH-1 [BC23]		BC23	ACI; API; AVI 3214
MSH6 [BC19]		BC19	ACI; API; AVI 3215