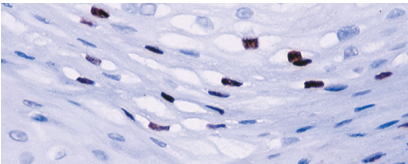




BIOCARE
M E D I C A L

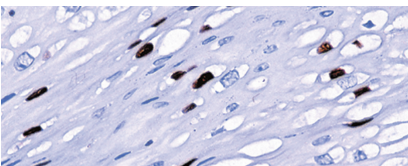
Key Antibodies For Cervical Pathology

Top Rated Cervical Antibodies



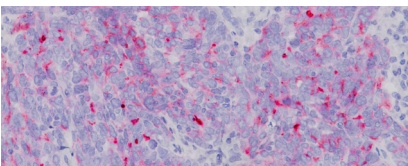
HPV-16 [CAMVIR-1]

HPV-16 [CAMVIR-1] detects the HPV-16 L1 antigen in formalin-fixed, paraffin embedded biopsy specimens and on routine cervical smears.



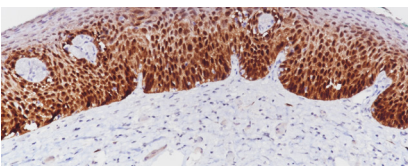
HPV Cocktail Broad Spectrum

HPV Cocktail Broad Spectrum detects HPV-1, 6, 11, 16-16, 18 and 31 in formalin-fixed, paraffin embedded biopsy specimens.



CA 125












CA 125 reacts with epithelial ovarian neoplasms of serous, endometrioid, clear cell & undifferentiated types as well as normal tissues and neoplasms of fallopian tube, endocervix and mesothelioma.



p16 INK4a

Studies suggests that p16 INK4a may help identify cervical intra-epithelial neoplasia and cervical cancer lesions in biopsies.

Key Antibodies for Cervical Pathology

Product Name	Source	Clone	Catalog Number
HPV-16 [CAMVIR-1]		CAMVIR-1	CM 186
MCM2 + TOP2A		OT18A11, UMAB146	AVI; API; OPAI 3181
HPV Cocktail Broad Spectrum	 ²	BPV-1/1H8 + CAMVIR-1	CM; PM 177
CA 125		OC125	CM; PM 101
Carcinoembryonic Antigen (CEA)		COL-1	CM; PM 058
p63		4A4	CM; PM; IP; VP 163
CD117/c-kit (RM)		EP10	CME; PME; IP 296
Topoisomerase II alpha		31	ACI; API 3045
CD11c (Leu-M5) (RM)		5D11	ACI; API 3122
VEGF (RM)		EP1176Y	CME 356
p16 INK4a		BC42	ACI; API 3231