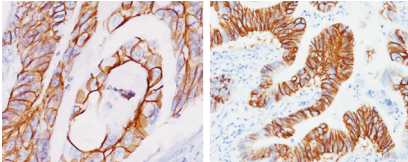




BIOCARE
M E D I C A L

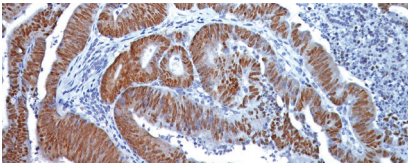
Key Antibodies For Colon Pathology

Top Rated Colon Antibodies



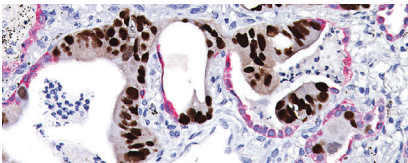
CDH17

CDH17 is a highly specific marker in colon cancer and is a more sensitive marker than CDX2 and CK20.



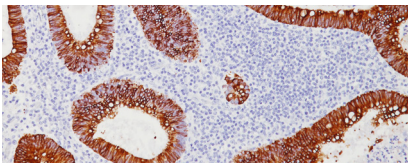
CDX2

CDX2 is a sensitive marker for colonic carcinoma metastatic to the ovary and is more specific than CK20 as it is not expressed by serous and endometrioid carcinomas.



CDX2 + CK7

This multiplex cocktail of CDX2 and CK7 can be used to distinguish colon cancers from breast, lung and ovarian cancers.

















Cytokeratin 20 (CK20)

Cytokeratin 20 is expressed in adenocarcinomas of the colon, stomach, pancreas, bile system, transitional cell carcinomas of the urinary tract, and Merkel cell carcinomas.

www.biocare.net/colon

Key Antibodies for Colon Pathology

Product Name	Source	Clone	Catalog Number
CDH17		1H3	ACI; API; AVI; VLTM 3111
CDX2 (RM)		EP25	ACI; API; VLTR 3144
CDX2 (M) + CDH17 (RM)		CDX2-88 + EP86	API 3135DS
Cytokeratin 20 (CK20)		Ks20.8	CM; PM; IP; OAI ; VLTM 062
MLH-1		G168-15	CM; PM; IPI; OAI; AVI 220
MSH2		FE11	CM; PM; OAI; AVI 219
MSH6		44	CM; PM; IPI; OAI; AVI 265
PMS2		A16-4	CM; PM; IPI; OAI; AVI 344
ERCC1		4F9	ACI 3147
CDX2		CDX2-88	CM; IP; OAI; PM; VP 226
SATB2 (RM)		EP281	ACI; API 3225
CDX2 + CK7		CDX2-88 + BC1	PM 367
MLH-1 [BC23]		BC23	ACI; API 3214
MSH6 [BC19]		BC19	ACI; API 3215