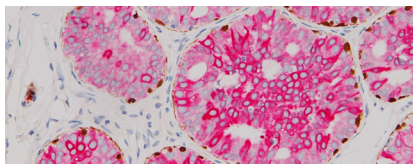




BIOCARE
M E D I C A L

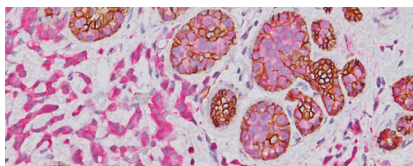
Key Antibodies For Breast Pathology

Top Rated Breast Antibodies



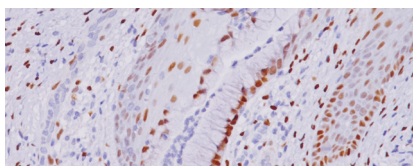
CK5/14 + p63 + CK7/18

This multiplex cocktail complements the morphological evaluation of breast lesions, due to the differential expression of the luminal (CK7/8).



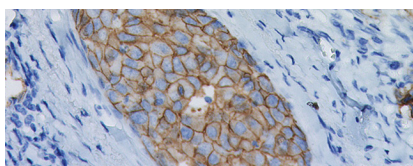
p120 + E-cadherin

Studies have shown accurate categorization of ductal vs. lobular neoplasia in the breast with p120 Catenin + E-cadherin.



Estrogen Receptor (ER) [SP1]
























ER is present in the nuclei of epithelial cells in normal breast and endometrial tissues, as well as a subset of breast carcinomas.



c-erbB-2/HER2

Studies have shown that c-erbB-2 positive breast cancer may correlate with negative staining for estrogen and progesterone receptors; thus a poorer predictive outcome is correlated with positive c-erbB-2 staining.

Key Antibodies for Breast Pathology

Product Name	Source	Clone	Catalog Number
CD54 [E3Q9N]		E3Q9N	ACI; API; AVI; ALI; OPAI 3296
Mast Cell Tryptase [AA1]		AA1	ACI; API; OPAI; ALI; AVI; 3277
HER2/neu [IHC042]		IHC042	ACA; APA; OPAA; ALA; AVA 3274
CD39 [EPR20627]		EPR20627	ACI; API; OPAI; ALI; AVI; 3283
CK5/14 + p63 + CK7/18	 	XM26/LL002 + 4A4 + BC1/EP30	PM; VP 360
GCDFP-15 + Mammaglobin	 	D6 + 31A5	PM 317DS
p120 + E-cadherin	 	98/pp120 + EP6	API 3011DS
Estrogen Receptor (ER) [SP1]		SP1	ACA; APA; ALA; OPAA 301
H3K27me3 [C36B11]		C36B11	OPAI; ALI; AVI; ACI; API 3249
Progesterone Receptor (PR) [16]		16	OPAA; ALA; AVA; ACA 424
GATA-3		L50-823	CM; PM; OPAI; ALI 405
Cytokeratin 7 (CK7) (RM)		BC1	CRM; PRM; IP 339
PCNA [PC10]		PC10	ACI; API; AVI 3255
PD-1		NAT105	ACI; API 3137
Pan TRK [RM423]		RM423	ACI; API; OPAI; AVI; ALI 3267
c-erbB-2/HER2 (RM)		EP3	ACA; APA; OPAA; ALA; AVA 342
Cytokeratin 5/14 Cocktail		XM26 + LL002	ACI; API 3025
E-Cadherin		HECD-1	CM; IP; PM; ALI; AVI; OPAI 170
Mammaglobin		1A5	PM 269
p27 KIP1 [Y236]		Y236	ACI; API; OPAI; ALI; AVI; 3282