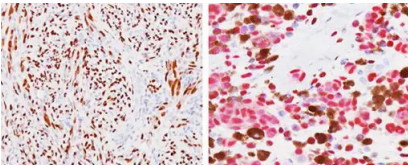


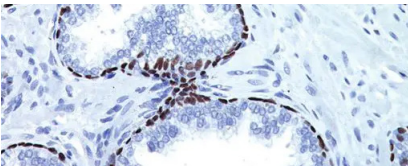
SAVE BIG WITH 25mL Antibodies

Top 25mL Antibodies



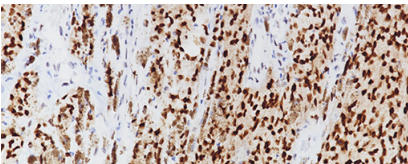
SOX10

The SOX10 protein is widely expressed in normal human tissues including melanocytes and breast tissue.



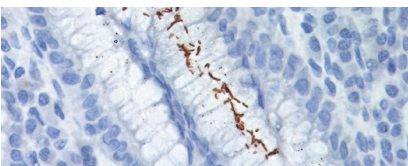
p63

p63, a homolog of the tumor suppressor p53, has been identified in basal cells in the epithelial layers of a variety of tissues, including epidermis, cervix, urothelium, breast and prostate.



PRAME [EPR20330]

PRAME is currently being investigated as a novel diagnostic marker with ongoing clinical trials that include multiple myeloma, breast cancer, pancreatic cancer, brain cancer.



Helicobacter pylori

Helicobacter pylori are spiral-curved, gram-negative bacteria that is present on surface epithelium of the mucous layer of the stomach.

25mL Prediluted Antibodies

Product Name	Catalog Number
AMACR (RM)	APA3024H
AMACR (RM), 2X	APA3016H
Ber-EP4	PM107H
c-erbB-2/HER2	APA342H
CD 20 B-Cell (L26)	PM004H
CD3 (PS1)	PM110H
CD3 [LN10]	API3152H
CD34 (QBEnd-10)	PM084H
CDX2	PM226H
CDX2 + CK7	PM367DSH
CK HMW + p63 + AMACR (RM)	API3154DSH
CK5 + p63 Cocktail	PM235H
CK5/14 + p63 + CK7/18	PM360DSH
CK5/14 + p63 + P504S	PPM225DSH
CK5/14 + p63 + P504S	PPM225H
Cytokeratin 20 (Ks 20.8)	PM062H
Cytokeratin Pan (AE1-AE3)	PM011H
Estrogen Receptor (ER) [6F11+SP1]	APA308H
Estrogen Receptor (ER) [SP1]	APA301H
GATA-3	PM405H
Helicobacter Pylori	PM383H
H. pylori [EPR10353]	APA3291H
HMB45 + MART-1 + Tyrosinase	PM165H
HMW Cytokeratin (34BE12)	PM127H
Ki-67	PRM325H
Ki-67 [MIB-1]	API3156H
LMW Cytokeratin (5D3)	PM056H
Mammaglobin (M)	PM269H
MART-1 Melan A	PM077H
MCM2 + TOP2A	API3181H
Melan A [A103]	API3114H
MITF	PM423H
MLH-1 [G168-15]	PM220H
MLH-1 [BC23]	API3214H
MSH2 [FE11]	PM219H
MSH6 [44]	PM265H
MSH6 [BC19]	API3215H
Myeloperoxidase	PP023H
Napsin A	PM388H
p16 + Ki-67	API3246DSH

Product Name	Catalog Number
p16 INK4a [BC42]	API3231H
p40 (M)	API3066H
P504S (P)	APA200H
P504S-2X	PP365H
p63 + P504S	PPM201H
p63	PM163H
Pan Cyto (AE1-AE3-5D3)	PM162H
Pan Melanoma + Ki-67	PM362DSH
PAX8 (M)	API438H
PMS2 [A16-4]	PM344H
PRAME [EPR20330]	API3252H
Progesterone Receptor (PR)[PgR636]	APA343H
S100 Protein [4C4.9](M)	API3237H
Smooth Muscle Actin	PM001H
SOX10	API3099H
TTF-1	PM087H

25mL UltraLine Antibodies

Product Name	Catalog Number
Breast Cocktail (CKHMW/ p63 + CK7/8/18)	AVI3203DSKG25
Melan A (M)	AVI3114G25
p16 INK4a [BC42]	AVI3231G25
p40 (M)	AVI3066KH
P504S	AVA200G25
p63	VP163G25
p63 + P504S	VP201G25
Pan Cyto (AE1-AE111)	VP011G25
PRAME [EPR20330]	AVI3252G25
SOX10	AVI3099H
Uroplakin II [BC21]	AVI3051KG25

25mL Q Series Antibodies

Product Name	Catalog Number
H. pylori [EPR10353]	ALA3291G25
Ki-67 [MIB-1]	ALI3156G25
PRAME [EPR20330]	ALI3252H
SOX10	ALI3099G25