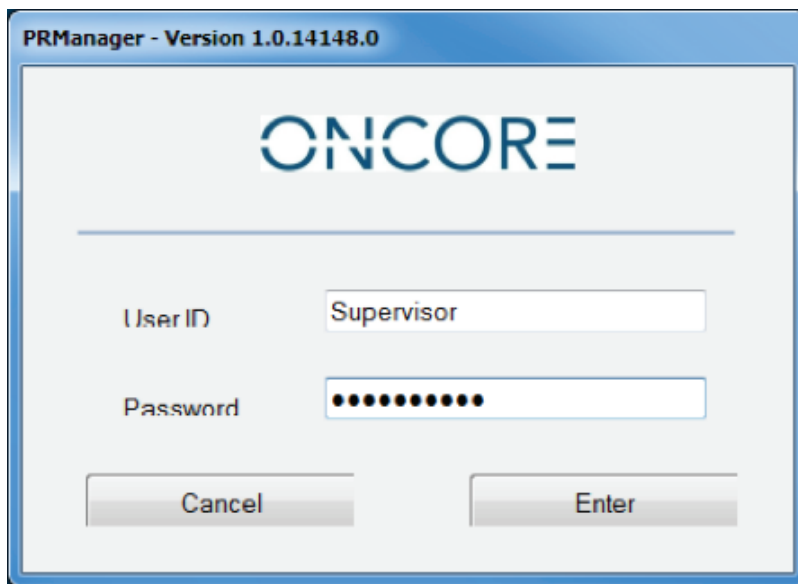
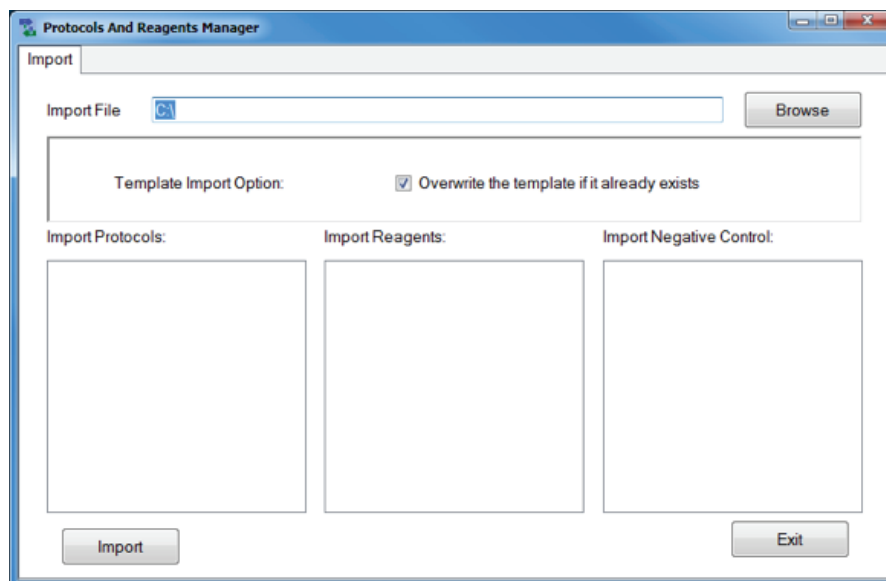


Using the PRManager to Import an Antibody Protocol

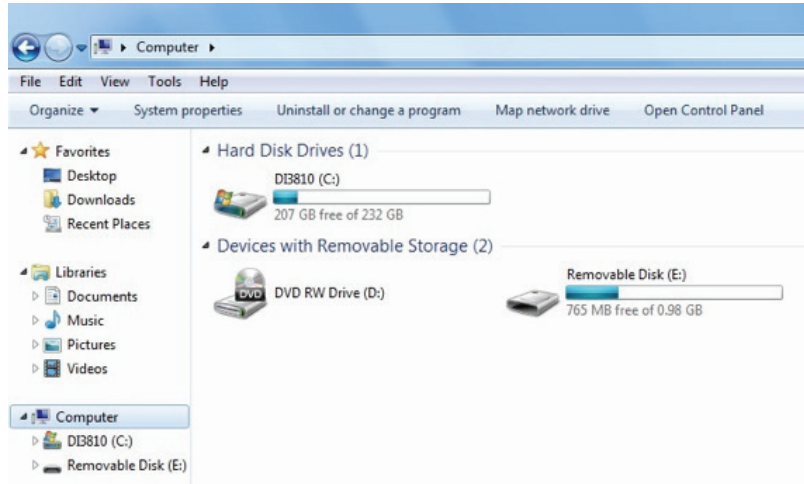
1. Go to www.biocare.net/products/instrumentation/oncore/ and click on the ONCORE subsection called "Protocols". Find the antibody that you would like to import to the ONCORE System Software and download the associated .zip file to a USB Flash Drive. Take the Flash Drive and plug it into the ONCORE Computer USB port.
2. Log in as Supervisor using the PRManager shortcut on the desktop of the ONCORE Computer. Contact Biocare Medical Technical Support if PRManager does not exist on the ONCORE desktop.



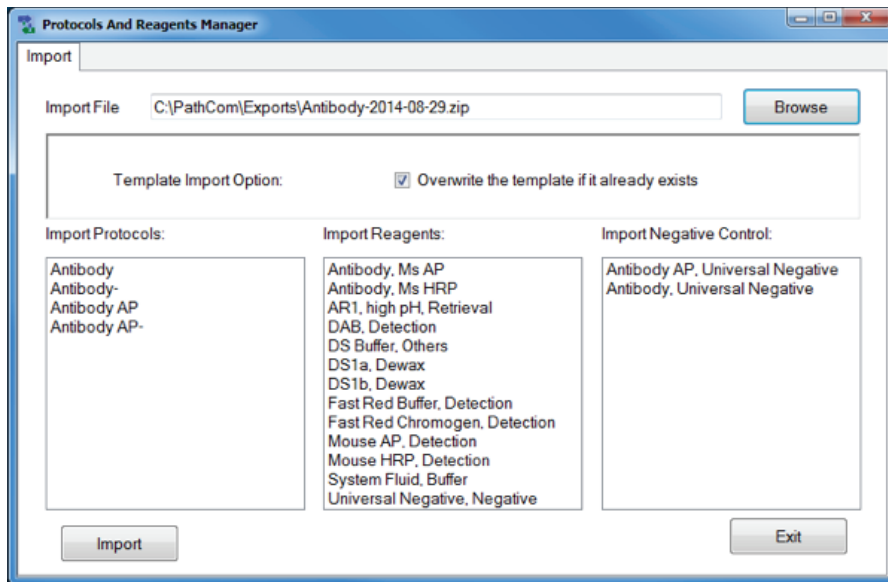
3. The Import tab will be displayed.



4. Click on Browse and locate the .zip file to be imported on the USB Flash Drive located on Removable Disk (E:) of the Computer.

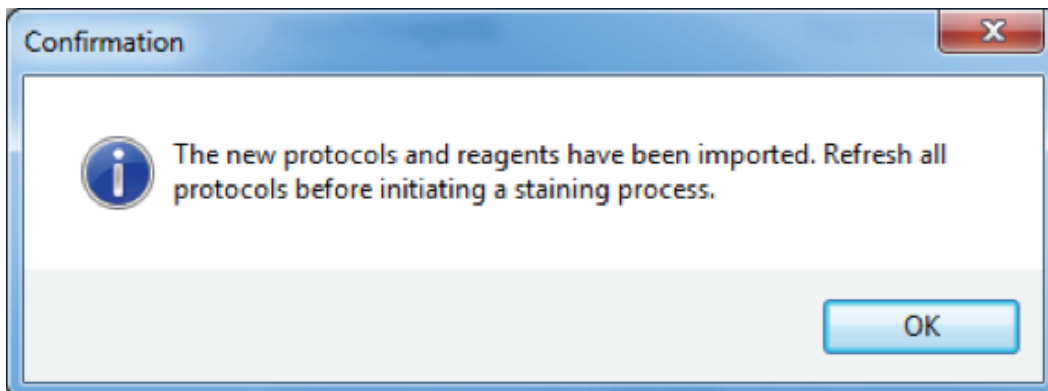


5. New protocols will be listed after selecting the zip package.



6. Click on Import

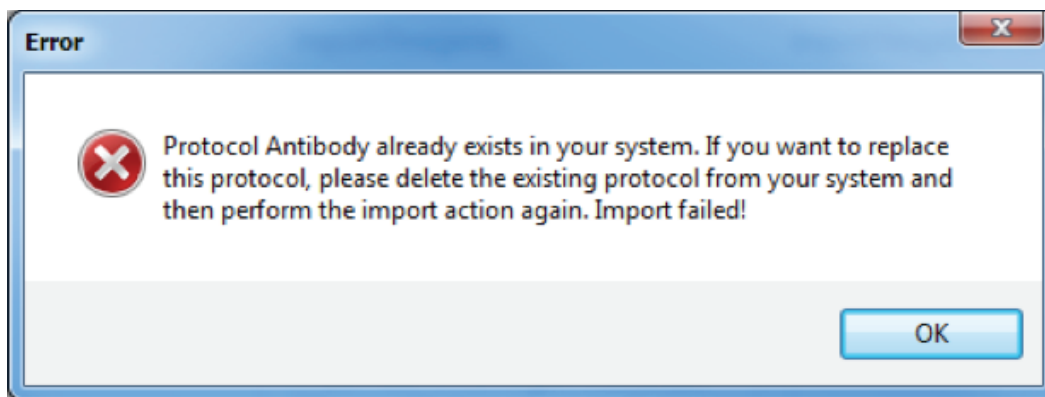
7. A confirmation message will be displayed. Click OK. Exit PRManager.



8. Log in to ONCORE system software as a Supervisor.
9. Click on System Utilities.
10. Select the Editors tab and click on Protocol Editor.
11. Select the tab in which the imported protocol has been added. (For example, Ms HRP.)
12. Click the gray box to the left of the column "Mark for Changed" of the protocol that has been imported (the row will turn blue) and click Refresh Protocol.
13. Click the gray box again and click on Save.
14. Repeat steps 10-12 for each template in which protocols have been imported. (For example, Ms AP.)

Procedure for Same Name Conflict

1. If Biocare distributes a new antibody and it already exists in the system, then the below message will appear as duplicate protocols are not allowed (please note any custom protocol settings in existing protocol before proceeding).



2. Log in to ONCORE system software as Supervisor.
3. After initialization, click on System Utilities.
4. Select the Editors tab and click on Protocol Editor.
5. Click the gray box to the left of the column "Mark for Changed" of the duplicate protocol (the row will turn blue) and click Delete.
6. Click the empty box immediately to the left of the column header "Mark for Changed" (all protocols should turn blue) and click Save.
7. Click on Return to return to the System Utilities screen.
8. Select the Settings tab and click on Save all Customizations to save the changes. Click OK to confirm. (Failure to perform this step will result in loss of changes and return to the previous settings.)
9. Import duplicate protocol in PRManager.
10. If retaining the previous protocol is desired, then it can be created again as a new protocol with a revised name.

BIOCARE
M E D I C A L

800.799.9499
4040 Pike Lane
Concord CA 94520

www.biocare.net

WI 751-01-65-011215