

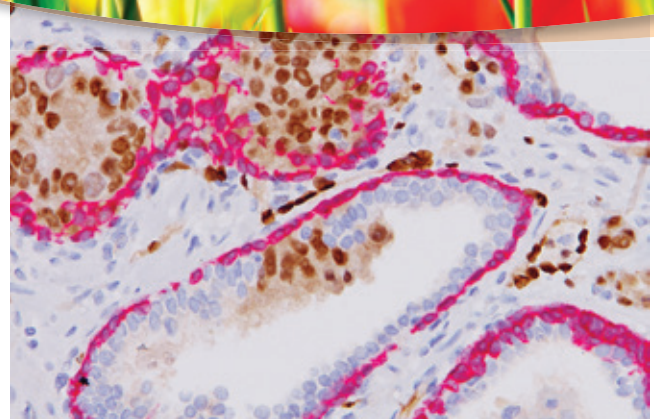
Multiplex IHC

Patient care at its best

Preserve Tissue · Save Time & Money · Improve Patient Care

Biocare Medical's innovative range of IHC products includes novel antibody combinations and highly sensitive multiplex detection technology. These products allow for simultaneous IHC testing of morphologically distinct antigens which prevents the redundant staining of sections in cases where tissue is limited. Use of Multiplex IHC™ reagents also decreases total protocol time and the number of slides required, resulting in significant reagent and labor cost savings.

- ▶ Simultaneously Test for Multiple IHC markers
- ▶ Prevents the Unnecessary Staining of Limited Tissue
- ▶ Replace up to Four Single Antibodies
- ▶ Reduces Labor & Reagent Cost by >50 percent



ERG (DAB) + CK5 (FR) in prostate cancer and PIN*

Multiplex IHC™

Breast Markers	Cat. No.
CK5/14 + p63 + CK7/18	PM 360DS; VP 360DSK
p120 + E-cadherin	API 3011DS
GCDFP-15 + Mammaglobin	PM 317DS
Bladder Markers	Cat. No.
Uro-2™ (CK20 + p53)	API 3001DS
Uro-3 Triple Stain™	PM 370TS
Lymphatic Markers	Cat. No.
D2-40 + CD31	APR 3021DS
D2-40 + CK8/18	APR 3034DS
D2-40 + Ki-67	PM 399DS
Lung Markers	Cat. No.
Desmoglein 3 + Napsin A	PPM 428DS
p63 + CK5	PM 391DS
p63 + TRIM29	PPM 427DS
PulmoPanel™ Multiplex IHC	PPM 436AAK
TTF-1 + CK5	PM 425DS
TTF-1 + Napsin A	PPM 394DS
Melanoma Markers	Cat. No.
Pan Melanoma + Ki-67	PM 362DS
Pan Melanoma + S100	PPM 213DS
Prostate Markers	Cat. No.
CK5/14 + p63 + P504S	PPM 225DS
ERG + AMACR	APR 3013DS
ERG-2™ (ERG + CK5)	API 437DS; AVI 437DSK
Additional Markers	Cat. No.
CD4 (M) + CD8 (RM)	PM 395DS
CDX2 + CK7	PM 367DS
Kappa + Lambda	PPM 214DS
Ki-67 + Caspase-3	PPM 240DS
L26 + CD3	PM 237DS

Detection

Multiplex Detection	Cat. No.
MACH 2 Double Stain 1	MRCT523
MACH 2 Double Stain 2	MRCT525