

Key Antibodies For  
**Lymphoma Cancer**



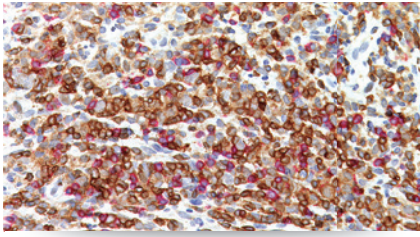
Lymphomas are the fifth highest diagnosed cancer in the United States, with about 4.8% of new cancer cases classified as either Hodgkin or non-Hodgkin lymphoma, contributing approx. 3.6% of cancer deaths yearly. As of 2012, there were approximately 740,000 people living with lymphoma in the United States. Those diagnosed with lymphoma have a 5 year survival rate of 70% (non-Hodgkin) or 86% (Hodgkin). Over the last 10 years, the new cancer case rate has remained stable and the death rate has not changed significantly either. Biocare Medical is proud to offer key lymphoma antibodies that may aid in the identification of their respective proteins by IHC in FFPE tissues.

SEER Cancer Statistics Factsheets: Non-Hodgkin Lymphoma. National Cancer Institute. Bethesda, MD, <http://seer.cancer.gov/statfacts/html/nhl.html>  
SEER Cancer Statistics Factsheets: Hodgkin Lymphoma. National Cancer Institute. Bethesda, MD, <http://seer.cancer.gov/statfacts/html/hodg.html>

Key Antibodies for Lymphoma Cancer

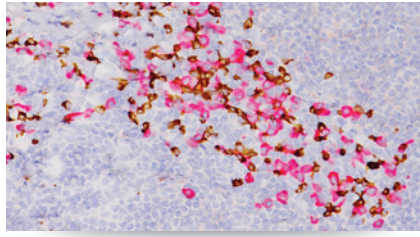
Product Name	Source	Clone	Catalog Number
CD4 (M) + CD8 (RM)	+	BC/1F6 + SP16	PM 395DS
Kappa + Lambda	+	KDB-1 + Polyclonal	PPM 214DS
L26 + CD3	+	L26 + SP7	PM 237DS
Bcl-2		100/D5	CM 003; PM 003; IP 003; OAI 003
CD5 (M)		4C7	CM 099; PM 099; OAI 099
CD10		56C6	CM 129; PM 129; IP 129; OAI 129
CD30 (Ki-1)		CON6D/B5	CM 346; PM 346
CD79a		HM47/A9	CM 067; PM 067
SOX11 (M)		SOX11-C1	ACI 3120; API 3120

# Key Antibodies for Lymphoma



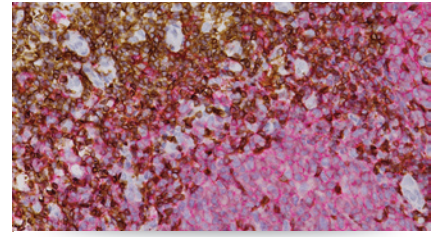
## CD4 (M) + CD8 (RM)

CD4 is expressed in the majority of T-cell lymphomas. CD8 is found in cortical thymocytes, T-cells and NK cells. The CD4:CD8 ratio may be helpful in distinguishing mycosis fungoides from its inflammatory mimics. This Multiplex IHC allows ratios and/or cell counts to be done on a single slide.



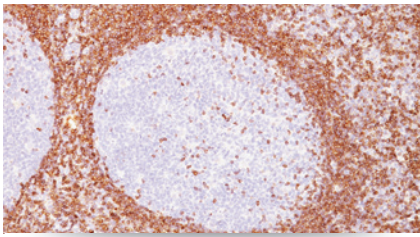
## Kappa + Lambda

Kappa + Lambda light chain counts and ratio may be useful in the identification of certain non-Hodgkin's lymphomas as these malignancies often express a single light chain class. A single slide with the double stain may provide a more accurate and easier assessment of the Kappa:Lambda ratio.



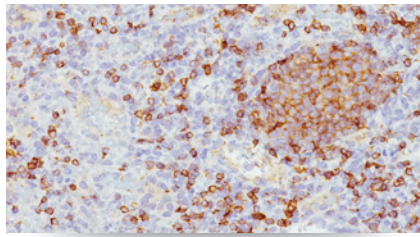
## L26 + CD3

L26 (CD20) + CD3 allows B-cell and T-cell lymphomas to be identified on the same slide. In normal lymphoid tissue, L26 marks B-cells in germinal centers and rarely marks T-cells. CD3 stains human T-cells in both the cortex and medulla of the thymus and in peripheral lymphoid tissues.



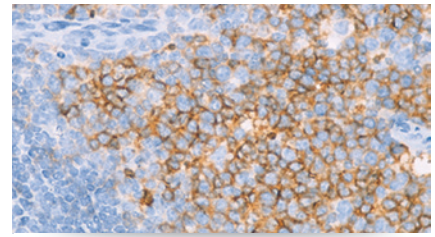
## Bcl-2

Bcl-2 (b-cell lymphoma #2) is highly expressed in most follicular lymphoma neoplastic germinal centers, whereas the normal or hyperplastic germinal centers are negative. Some diffuse large B-cell lymphomas are Bcl-2 positive while Burkitt's lymphoma is generally negative.



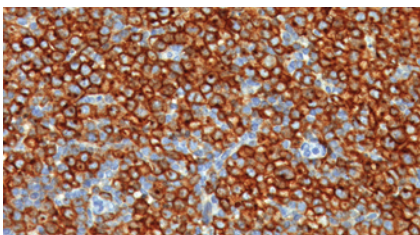
## CD5 (M)

CD5 is a T-cell associated marker that is also expressed by mantle cell lymphoma. CD5 has been observed in a subset of intravascular large B-cell lymphomas and anaplastic large cell lymphomas. CD5 is useful for mantle cell lymphoma when used in tandem with CD23, cyclin D1, and CD10.



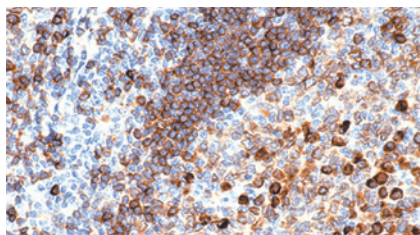
## CD10

CD10, also known as common acute lymphoblastic leukemia (CALLA), has been shown to react with TdT+ lymphoblastic leukemia, follicular germinal cell lymphoma, Burkitt's lymphoma and chronic myelocytic leukemia. CD10 also marks normal early lymphoid progenitor cells and immature B-cells.



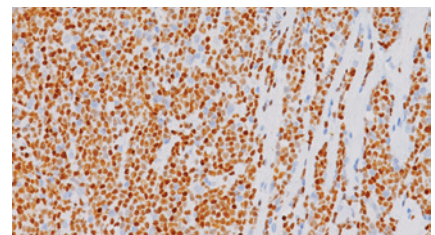
## CD30 (Ki-1)

CD30 (Ki-1) is expressed in mononuclear and Reed-Sternberg cells in Hodgkin's disease and in a majority of anaplastic large cell lymphomas. It may distinguish large cell lymphomas from histiocytic malignancies. CD30 with CD15 may differentiate between anaplastic large cell lymphoma and Hodgkin's disease.



## CD79a

CD79a is found in a majority of acute leukemia of precursor-B-cell-type as well as B-cell neoplasms and B-cell lymphomas. It is not present in myeloid or T-cell lines. This antibody labels precursor B-cell acute lymphoblastic leukemia, and has been suggested as the most reliable B-cell marker for this disorder.



## SOX11 (M)

SOX11 antibody (SRY (Sex Determining Region Y)-Box 11) is expressed in most mantle cell lymphomas (MCL) and, in particular, in all cyclin D1 negative MCLs reported so far. The novel SOX11-C1 offers high sensitivity and improved specificity compared to previous SOX11 IHC antibodies.

**BIOCARE**  
M E D I C A L

800.799.9499  
4040 Pike Lane  
Concord CA 94520

[www.biocare.net](http://www.biocare.net)