

# LAMP1 (13q34) Green

FISH Probe  
903-7281-102517

**BIOCARE**  
M E D I C A L

**Catalog Number:** HFA7281A

**Description:** LAMP1 (13q34) Green FISH Probe

**Volume:** 100 µL

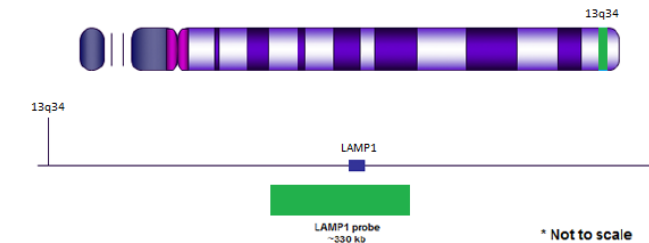
## Intended Use:

Analyte Specific Reagent. Analytical and performance characteristics are not established.

## Reagents Provided:

The LAMP1 (13q34) Green FISH Probe is a fluorescently labeled probe designed to hybridize to ~330 kb of the 13q34 region of chromosome 13.

LAMP1 (13q34) Green probe (10 ng/µl) is provided in FISH Hybridization Buffer (FRR7311A) containing dextran sulfate and formamide.



## Storage and Stability:

Store probe at -20°C and away from light. The product is stable to the expiration date printed on the label, when stored under these conditions. Do not use after expiration date.


## Technical Note:

Biocare Medical FISH probes are optimized to provide the best signal performance using optical filters that can accommodate the excitation/emission wavelengths specified below. Using filters outside these spectral specifications may produce sub-optimal results.

Fluorophore	Excitation (nm)	Emission (nm)
AQUA	434	481
GREEN	498	522
ORANGE	537	556
RED	593	618

## Precautions:

1. This product is an Analyte Specific Reagent (ASR). Analytical and performance characteristics are not established.
2. The LAMP1 (13q34) Green FISH probe may cross-hybridize to other areas on the human genome. It is the responsibility of the user to validate any test for its specific use.
3. This product contains formamide, which may be toxic. Formamide may cause serious eye damage or reproductive toxicity. It may also cause irritation by inhalation or skin contact. Avoid any direct contact exposure to reagent. Take appropriate protective

 Biocare Medical  
60 Berry Drive  
Pacheco, CA 94553  
USA

Rev. 062117

Tel: 800-799-9499 | www.biocare.net | Fax: 925-603-8080

- measures (use disposable gloves, protective glasses, and lab garments).
4. Specimens, before and after fixation, and all materials exposed to them should be handled as if capable of transmitting infection and disposed of with proper precautions. Never pipette reagents by mouth and avoid contacting the skin and mucous membranes with reagents and specimens. If reagents or specimens come in contact with sensitive areas, wash with copious amounts of water<sup>1</sup>.
  5. The SDS is available upon request and is located at <http://biocare.net/>.

## References:

1. Clinical and Laboratory Standards Institute (CLSI). Protection of Laboratory workers from occupationally Acquired Infections; Approved Guideline-Fourth Edition CLSI document M29-A4 Wayne, PA 2014.