

# Copy Control X Red + Copy Control Y Green

FISH Probe  
902-7050-111517

**BIOCARE**  
M E D I C A L

**Catalog Number:** PFR7050A

**Description:** Copy Control X Red + Copy Control Y Green FISH Probe

**Dilution:** Ready-to-use

**Volume:** 100 µL

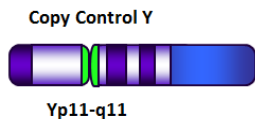
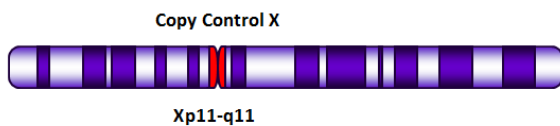
**Intended Use:**

For Research Use Only. Not for use in diagnostic procedures.

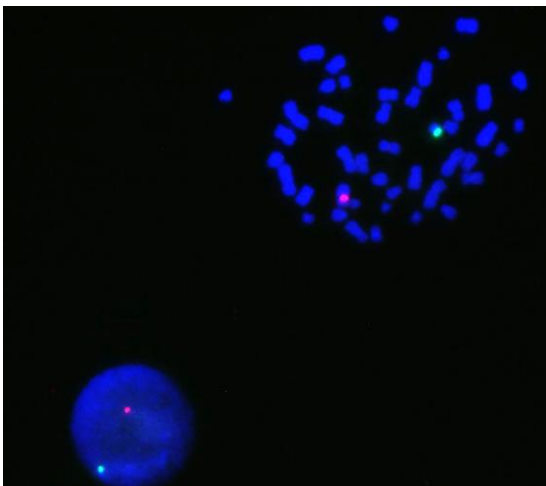
**Summary and Explanation:**

The Copy Control X FISH Probe is a fluorescently labeled probe designed to hybridize to human  $\alpha$ -satellite DNA sequences located at the centromere region of chromosome X. The Copy Control Y FISH Probe is a fluorescently labeled probe designed to hybridize to human  $\alpha$ -satellite DNA sequences located at the centromere region of chromosome Y.

Copy Control X Red + Copy Control Y Green probe is provided in FISH Hybridization Buffer (FRR7311A) containing dextran sulfate and formamide.



\*not to scale



Copy Control X Red + Copy Control Y Green FISH Probe hybridized on male hematological sample. A normal male sample will show one red and one green signal.

**Species Reactivity:** Human

**Known Application:**

Fluorescence In-situ Hybridization (FISH) on formalin-fixed paraffin-embedded (FFPE) tissues.

**Supplied As:** Probe in hybridization buffer.

**Storage and Stability:**

Store probe at -20°C and away from light. The product is stable to the expiration date printed on the label, when stored under these conditions. Do not use after expiration date.

**Technical Note:**

Biocare Medical dual color FISH probes are optimized to provide the best signal performance using optical filters that can accommodate the excitation/emission wavelengths specified below. Using filters outside these spectral specifications may produce sub-optimal results.

Fluorophore	Excitation (nm)	Emission (nm)
GREEN	498	521
RED	593	618

**Limitations:**

This product is provided for Research Use Only (RUO) and is not for use in diagnostic procedures. Suitability for specific applications may vary and it is the responsibility of the end user to determine the appropriate application for its use.

**Precautions:**

1. This product contains formamide, which may be toxic. Formamide may cause serious eye damage or reproductive toxicity. It may also cause irritation by inhalation or skin contact. Avoid any direct contact exposure to reagent. Take appropriate protective measures (use disposable gloves, protective glasses, and lab garments). The SDS is available upon request and is located at <http://biocare.net>.
2. Specimens, before and after fixation, and all materials exposed to them should be handled as if capable of transmitting infection and disposed of with proper precautions. Never pipette reagents by mouth and avoid contacting the skin and mucous membranes with reagents and specimens. If reagents or specimens come in contact with sensitive areas, wash with copious amounts of water<sup>1</sup>.

**Technical Support:**

Contact Biocare's Technical Support at 1-800-542-2002 for questions regarding this product.

**References:**

1. Clinical and Laboratory Standards Institute (CLSI). Protection of Laboratory workers from occupationally Acquired Infections; Approved Guideline-Fourth Edition CLSI document M29-A4 Wayne, PA 2014.

 Biocare Medical

60 Berry Drive  
Pacheco, CA 94553

USA

Rev. 062117

Tel: 800-799-9499 | [www.biocare.net](http://www.biocare.net) | Fax: 925-603-8080