

ERG Translocation

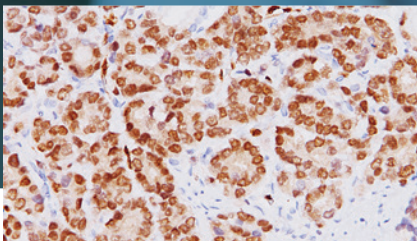
99.9%
Specificity

Features

- ▶ ERG positive PIN associated with 96.5% of positive carcinoma*
- ▶ 99.9% specific for prostate carcinoma with clone 9FY
- ▶ No cross-reactivity with infiltrating T- and B- cells

Know.

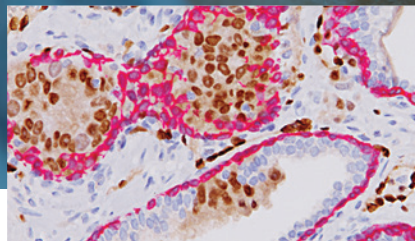
ERG



Prostate cancer stained with ERG (9FY) antibody

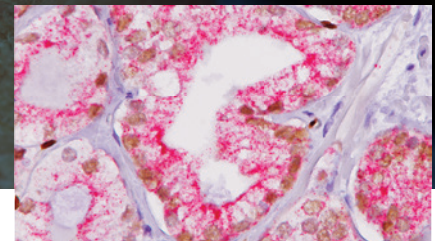
www.biocare.net

ERG-2 (ERG + CK5)



ERG-2 (ERG (DAB) + CK5 (FR)) in prostate cancer and PIN

ERG + AMACR



ERG (DAB) + AMACR (FR) in prostate cancer

*in prostatectomy specimens

ERG translocation: The molecular hallmark of a new class of prostate cancer

Present in 50-70% of all prostate carcinomas, ERG oncoprotein expression has been shown to be a highly specific marker for prostate cancer. Given the lack of ERG expression in a wide variety of normal epithelial tissues and tumors, and its robust presence in prostatic adenocarcinoma, detection of ERG expression by 9FY offers a definitive marker of adenocarcinoma of prostatic origin. The ERG oncogene is frequently overexpressed due to chromosomal translocations involving ERG and regulatory sequences of the TMPRSS2 or other androgen responsive genes.

Recently, a mouse monoclonal anti-ERG antibody, clone 9FY, was developed showing an unprecedented 99.9% specificity for detecting prostatic adenocarcinoma. Independent reports demonstrate 97-100% correlation between the expression of the ERG protein and the presence of TMPRSS2:ERG rearrangement and a remarkable concordance (96.5%) of ERG positive prostatic intraepithelial neoplasia (PIN) and ERG positive carcinoma in prostatectomy specimens.

Detection of ERG expression by 9FY offers a rare, but definitive marker of adenocarcinoma of prostatic origin, and unique opportunities to indicate oncogenic activations in PIN, to stratify prostate cancer patients for ERG oncogene status and to monitor treatment efficacy. Towards the stratification of patients, comparative evaluations of ERG protein expression status with 9FY and TMPRSS2-ERG gene fusions in hormone-naïve and castration resistant prostate cancers have shown promises for defining a subgroup of cases with dispensed androgen signaling pathway.

Further utilities for using the mouse monoclonal anti-ERG antibody, 9FY, has been shown recently in detecting vascular endothelium and endothelial malignancies, including Kaposi sarcoma. Recent reports have also demonstrated the superior performance of 9FY in chromatin immunoprecipitation (ChIP), immunofluorescence (IF) and immunoblot assays.

Notes: Clone 9FY [PATENT PENDING] was developed by the Center for Disease and Prostate Research with the Henry Jackson Foundation for the Advancement of Military Medicine, Rockville, Maryland, USA. This antibody is highly specific (99.9%) and does not cross-react with infiltrating lymphocytes.

References

- 1) Petrovics G, Liu A, Shaheduzzaman S, Furasato B, Sun C, Chen Y, Nau M, Ravindranath L, Chen Y-D, Dobi A, Srikantan V, Sesterhenn IA, McLeod DG, Vahey M, Moul WJ, Srivastava S.: Frequent overexpression of ETS related gene-1 (ERG1) in prostate cancer transcriptome. *Oncogene* 24, 3847-3852 (2005).
- 2) Rosen P, Sesterhenn IA, Brassell S, McLeod DG, Srivastava S, Dobi A.: ERG oncoprotein portrait in prostate cancer: Translational potential. *Nature Reviews Urology*, 2012 Feb 14. doi: 10.1038/nrurol.2012.10. (2012).
- 3) Furasato B, Tan SH, Young D, Dobi A, Sun C, Mohamed AA, Thangapazham R, Chen Y, McMaster G, Sreenath T, Petrovics G, McLeod DG, Srivastava S, Sesterhenn IA.: ERG oncoprotein expression in prostate cancer: clonal progression of ERG positive tumor cells and potential for ERG based stratification. *Prostate Cancer and Prostatic Diseases* 13, 228-237 (2010), published online 29 June 2010.
- 4) Braun M, Goltz D, Shaikhibrahim Z, Vogel W, Scheble V, Böhm D, Sotlar K, Fend F, Tan S-H, Dobi A, Wernert N, Perner S.: ERG protein expression and genomic rearrangement status in primary and metastatic prostate cancer - a comparative study of two monoclonal antibodies. *Prostate Cancer and Prostatic Diseases*, 2012 Jan 10. doi: 10.1038/pcan.2011.67. (2012).
- 5) Miettinen M, Wang Z-F, Paetau A, Tan S-H, Dobi A, Srivastava S, Sesterhenn IA.: ERG transcription factor as an immunohistochemical marker for vascular endothelial tumors and prostatic carcinoma. *American Journal of Surgical Pathology* 35, 432-441 (2011).
- 6) Mohamed AA, Tan S-H, Mikhalkevich N, Ponniah S, Vasioukhin V, Bieberich CJ, Sesterhenn IA, Dobi A, Srivastava S, Sreenath LT.: Ets Family Protein, Erg Expression in Developing and Adult Mouse Tissues by a Highly Specific Monoclonal Antibody. *Journal of Cancer* 1, 197-208 (2010).
- 7) Mohamed AA, Tan S-H, Sun C, Shaheduzzaman S, Hu Y, Petrovics G, Chen Y, Sesterhenn IA, Li H, Sreenath T, McLeod DG, Dobi A, Srivastava S.: ERG oncogene modulates prostaglandin signaling in prostate cancer cells, *Cancer Biology and Therapy* 11, 410-417 (2011).

Ordering Information

Product Name	Cat. No.	Description
ERG Antibody Concentrate	CM 421 A, C	ERG antibody in concentrate format
ERG Antibody Predilute	PM 421 AA, For Ventana Use: VP 421 G5	ERG antibody in predilute format
ERG-2 (ERG + CK5)	API 437DS AA, For Ventana Use: AVI 437DSK	ERG + CK5 Multiplex IHC antibody in predilute format
ERG + AMACR	API 3013DS	ERG + AMACR Multiplex IHC antibody in predilute format

BIOCARE
M E D I C A L
800.799.9499
4040 Pike Lane
Concord CA 94520

www.biocare.net