

BIOCARE
M E D I C A L

Chromogens

Vivid Color & Clarity for IHC



HRP Chromogens

Horseradish Peroxidase (HRP) chromogens are available in brown, black, green, red or purple. All HRP chromogens are insoluble in alcohol and can be coverslipped with a xylene, non-xylene or toluene-based permanent mounting media.

Betazoid DAB™

is superior to conventional DAB for stability and staining intensity. It is insoluble in alcohol or xylene and can be coverslipped just like any other DAB. Developed and available for both manual and automated protocols.

- ▶ Coconut Brown
- ▶ Superior stability and intensity
- ▶ 2-5 minute incubation
- ▶ May increase antibody titers by two fold

 Betazoid DAB staining c-erbB-2 in breast cancer

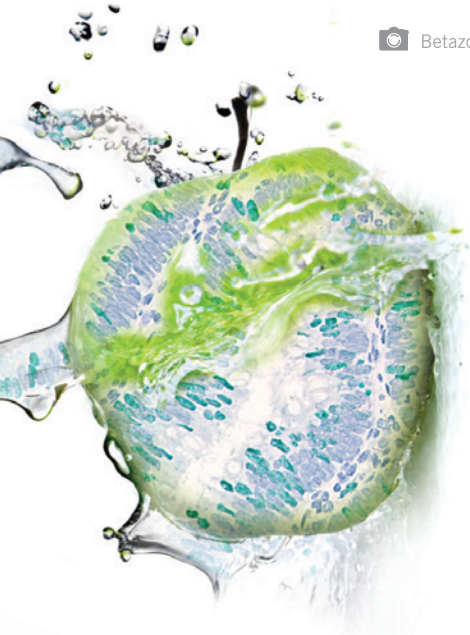


Vina Green™

is a permanent green chromogen and is clearly distinguishable from Warp Red and DAB on a single slide. Suitable for both immunohistochemistry (IHC) and *in situ* hybridization (ISH) applications.

- ▶ Candy Apple Green
- ▶ 5-10 minute incubation

 Vina Green staining Ki-67 in colon cancer



Romulin AEC™ produces a deep brick red stain and consists of four components: buffer, stabilizer, chromogen and hydrogen peroxide.

- ▶ Brick Red
- ▶ 5-10 minute incubation

 Romulin AEC staining Pan Cytokeratin in colon cancer



Deep Space Black™

is a novel permanent chromogen that produces a dark grey to black stain and consists of chromogen and buffer that are stable for 8 hours at room temperature once mixed. Deep Space Black is clearly distinguishable from our other chromogens when used in Multiplex IHC applications.

- ▶ Dark Gray to Black
- ▶ 3-5 minute incubation

 Deep Space Black staining Ki-67 in colon cancer



Bajoran Purple™

produces a permanent royal-purple stain and can be used in double- and triple-stain procedures and nitrocellulose blots. Bajoran Purple is viewable in both brightfield and darkfield microscopy.

- ▶ Royal Purple
- ▶ 2-10 minute incubation

 Bajoran Purple staining CK5 in squamous cell carcinoma



AP Chromogens

Alkaline phosphatase (AP) chromogens are available in red or blue. All AP chromogens can be coverslipped with a non-xylene or toluene-based permanent mounting media. Red AP chromogens can also be coverslipped with xylene based mounting media.

Warp Red™

is a faster, sharper and more stable red chromogen for both manual and automated systems. Warp Red is quick and sensitive; providing an accelerated protocol time with consistent staining quality. Its sensitivity is two times greater than standard Fast Red, creating a superior contrast for Multiplex IHC™.

- ▶ Bright Fuchsin Red color
- ▶ 5 - 7 minute incubation
- ▶ Compatible with immunofluorescence



📷 Warp Red staining PIN-4™ antigens with 5 minute incubation

Ferangi Blue™

produces a bright royal blue stain and is clearly distinguished from Warp Red and DAB, enabling high flexibility for Multiplex IHC applications. Coverslip with a non-xylene or toluene based permanent mounting media. Developed for both manual and automated systems.

- ▶ Bright royal blue color
- ▶ 5 - 7 minute incubation
- ▶ Enhanced staining signal

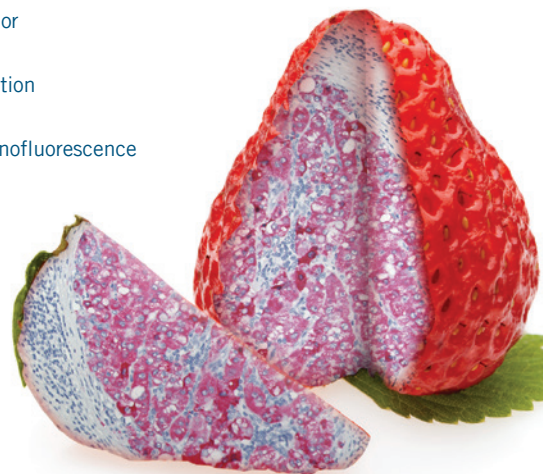


📷 Ferangi Blue staining CK8/18 in colon cancer

Vulcan Fast Red™

produces a bright fuchsin-red precipitate that can be viewed by both brightfield and darkfield microscopy. Vulcan Fast Red is available for both manual and automated systems.

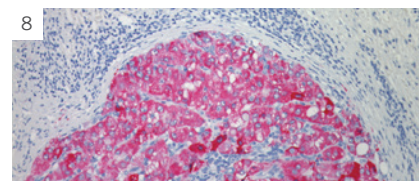
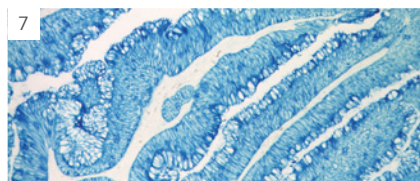
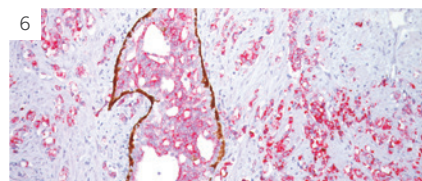
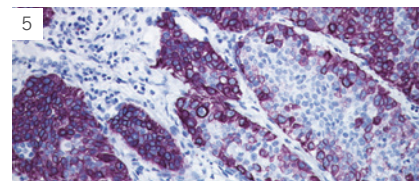
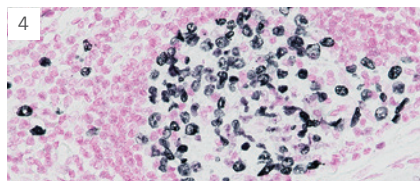
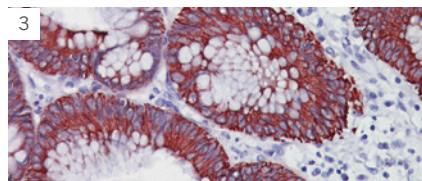
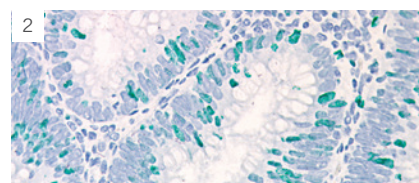
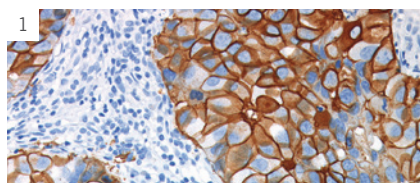
- ▶ Bright Fuchsin Red color
- ▶ 15 - 20 minute incubation
- ▶ Compatible with immunofluorescence



📷 Vulcan Fast Red staining S100 in melanoma

Chromogens

Vivid Color &
Clarity for IHC



1 Betazoid DAB Chromogen staining c-erbB-2 in breast cancer 2 Vina Green Chromogen staining Ki-67 in colon cancer 3 Romulin AEC staining colon cancer with Pan Cytokeratin
4 Deep Space Black Chromogen staining Ki-67 in colon cancer 5 Bajoran Purple Chromogen staining CK5 in squamous cell carcinoma 6 Warp Red Chromogen staining PIN-4™ antigens
with 5 minutes incubation 7 Ferangi Blue Chromogen staining CK8/18 in colon cancer 8 Vulcan Fast Red Chromogen staining S100 in melanoma

Ordering Information

HRP Chromogens	Color	Cat. No.
Betazoid DAB	Brown	BDB2004 H, L, MM
intelliPATH™ DAB Chromogen Kit	Brown	IPK5010 G80
Deep Space Black™	Black	BRI4015 H, L
Vina Green	Green	BRR807 AH, AS
Romulin AEC	Red	RAEC810 L, M
Bajoran Purple	Purple	BJP811 L
AP Chromogens	Color	Cat. No.
Warp Red™ Kit	Fuchsin Red	WR806 H, S
intelliPATH™ Warp Red™ Kit	Fuchsin Red	IPK5024 G80
Ferangi Blue™ Kit 2	Blue	FB813 H, S
intelliPATH™ Ferangi Blue™ Kit 2	Blue	IPK5027 G20
Vulcan Fast Red	Fuchsin Red	FR805 H, S, M, 5L
intelliPATH™ Fast Red Kit	Fuchsin Red	IPK5017 G80
Enhancements	Description	Cat. No.
DAB Sparkle™	Increase sensitivity and contrast	DS830 H, L, M

BIO CARE
M E D I C A L

800.799.9499
4040 Pike Lane
Concord CA 94520

www.biocare.net