

# Explore New Clones



## Find Something Brighter

Biocare Medical continually strives to provide new and innovative IVD antibodies for immunohistochemistry (IHC). Our unique mouse and rabbit monoclonal antibodies are developed and cGMP manufactured in-house to provide the highest quality IVD products available.

### PAX8(M)

The majority of currently existing anti-PAX8 rabbit polyclonal antibodies recognize B cells, pancreatic cancers, carcinoids, and some soft tissue tumors. PAX8(M) [BC12] was developed to recognize a restricted epitope to eliminate cross-reactivity with B cells and tumors of pancreatic origin while still being highly sensitive for renal cell and ovarian cancers<sup>1</sup>.












### Desmoglein 3

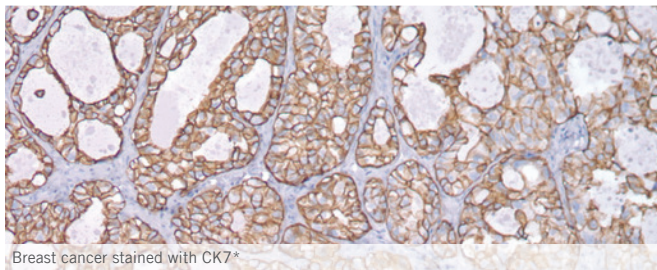
Desmoglein 3 (DSG3) is a potentially useful marker for lung Squamous Cell Carcinoma (SqCC) as well as an ancillary marker to separate SqCC from other subtypes of lung cancer. A study recently showed that a cocktail of DSG3 [BC11] + CK5 with Napsin A provided 100% sensitivity and specificity in SqCC and an 86% sensitivity and 100% specificity in adenocarcinomas<sup>2</sup>.

### CK7

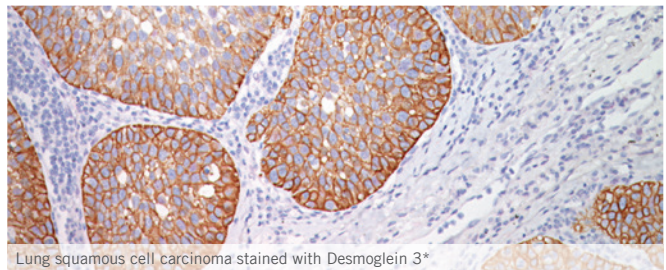
Cytokeratin 7 (CK7) is expressed in epithelial cells of ovary, lung and breast. Compared to mouse monoclonal [OV-TL 12/30], Biocare's CK7 [BC1] showed more intense and sharper staining in breast, lung and ovarian cancers. In addition, [BC1] showed no staining of adjacent stromal cells or lumen debris, a common issue with [OV-TL 12/30]<sup>3</sup>.

# Ordering Information

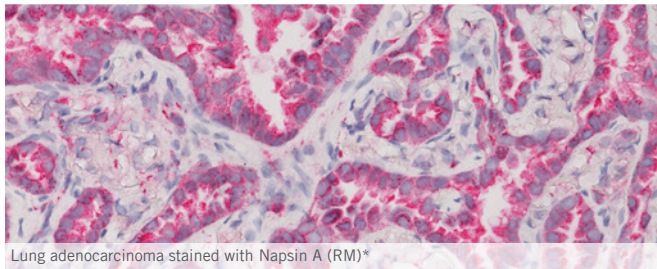
Product	Source	Clone	Status	Concentrated	Predilute
CD31		BC2	IVD	CM 347	PM 347
CD44		BC8	IVD	CM 380	PM 380
CK7		BC1	IVD	CRM 339	PRM 339
Desmoglein 3		BC11	IVD	CM 419	PM 419
IGF-1R		BC10	IVD	CM 414	N/A
MUM-1		BC5	IVD	CRM 352	PRM 352
Napsin A (RM)		BC15	IVD	ACI 3043	API 3043
p40 (M)		BC28	IVD	ACI 3066	API 3066
PAX8 (M)		BC12	IVD	ACI 438	API 438
Uroplakin II		BC21	IVD	ACI 3051	API 3051
Uroplakin III		BC17	IVD	ACI 3023	API 3023



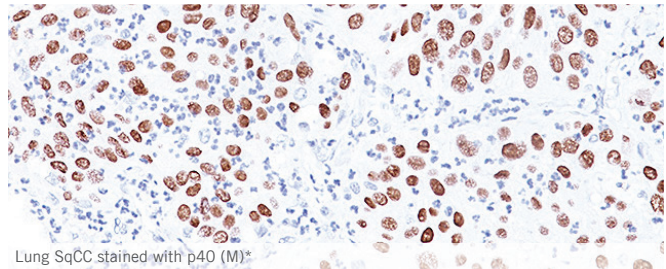
Breast cancer stained with CK7\*



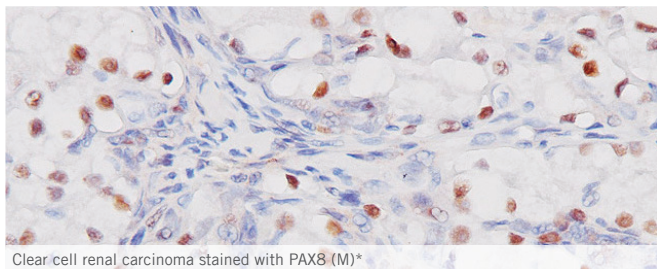
Lung squamous cell carcinoma stained with Desmoglein 3\*



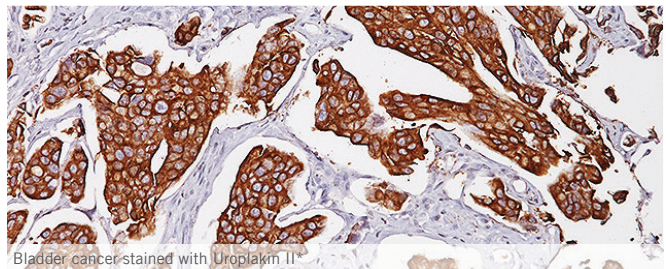
Lung adenocarcinoma stained with Napsin A (RM)\*



Lung SqCC stained with p40 (M)\*



Clear cell renal carcinoma stained with PAX8 (M)\*



Bladder cancer stained with Uroplakin II

\*Representative cancer cases

**BIOCARE**  
M E D I C A L

800.799.9499  
4040 Pike Lane  
Concord CA 94520

[www.biocare.net](http://www.biocare.net)